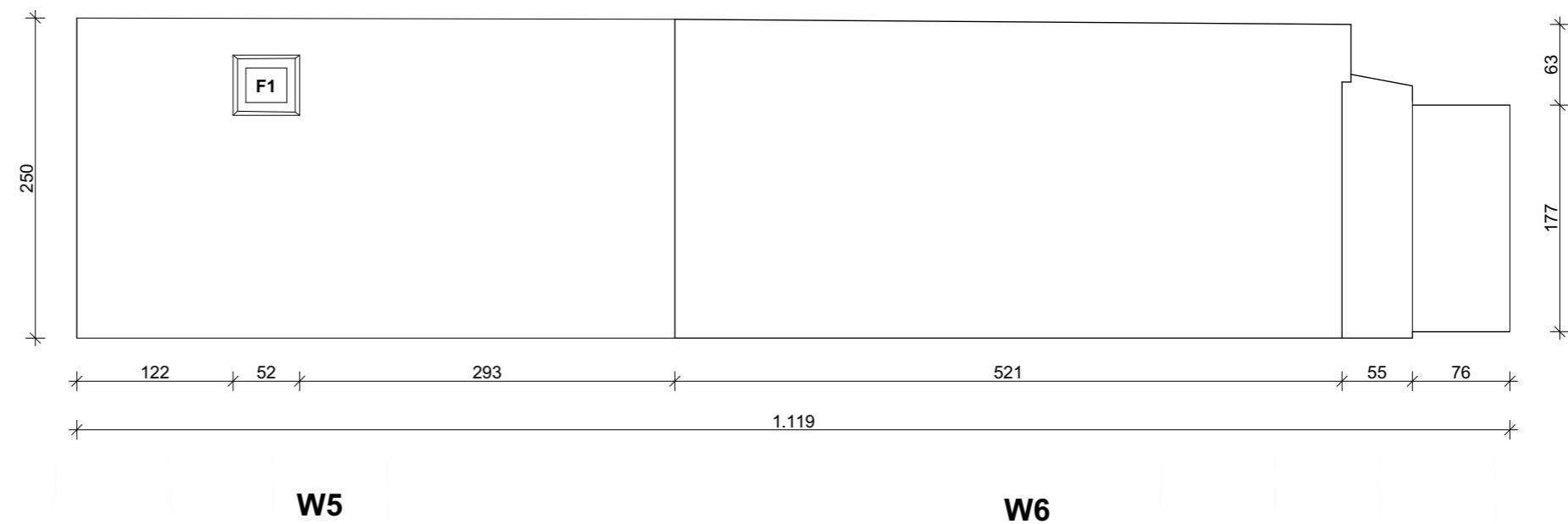
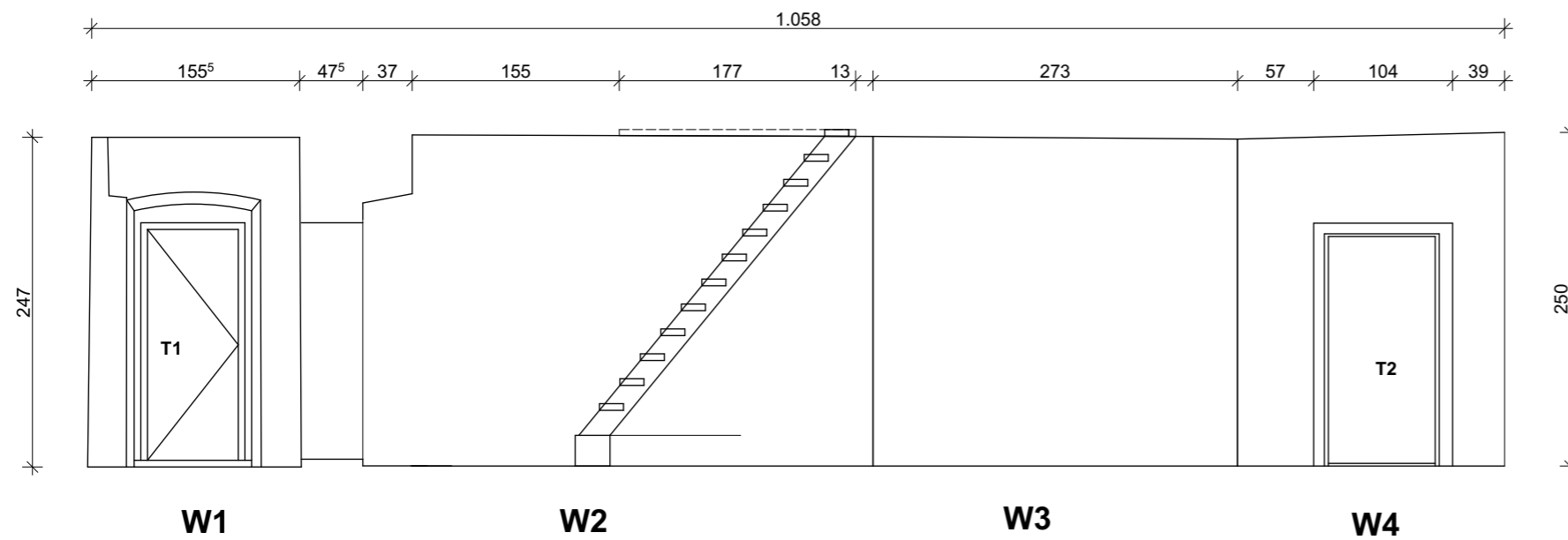


6.4 Flur



6.4.3 Wandabwicklung

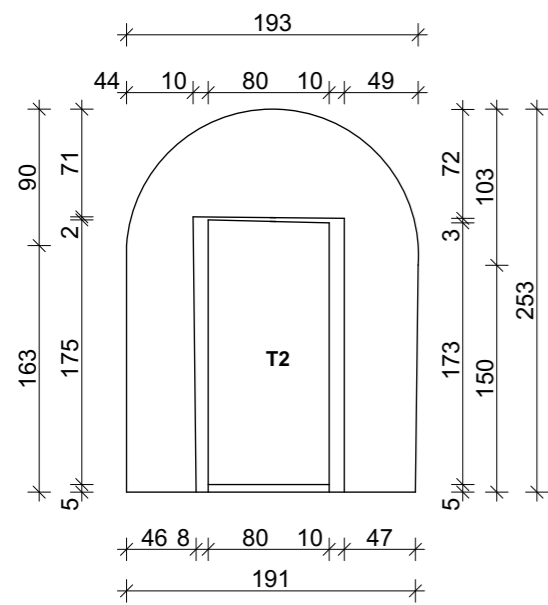


M 1:50

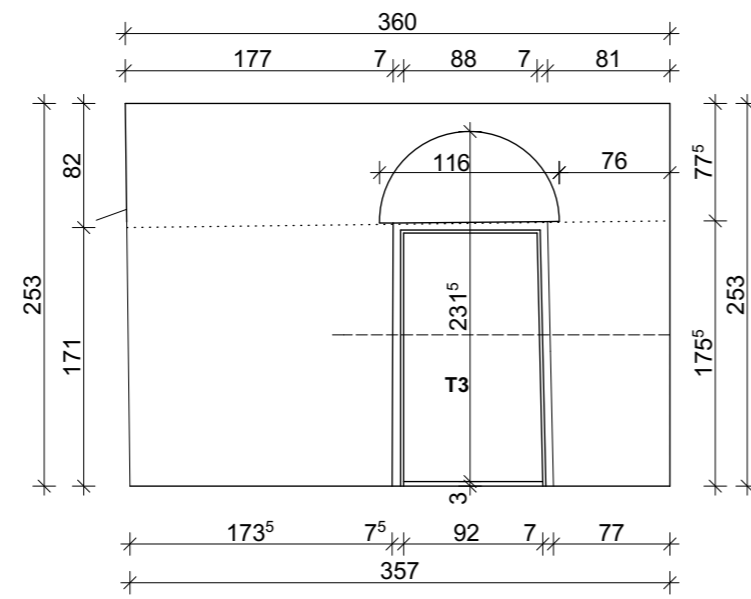
6.5 Rauchküche



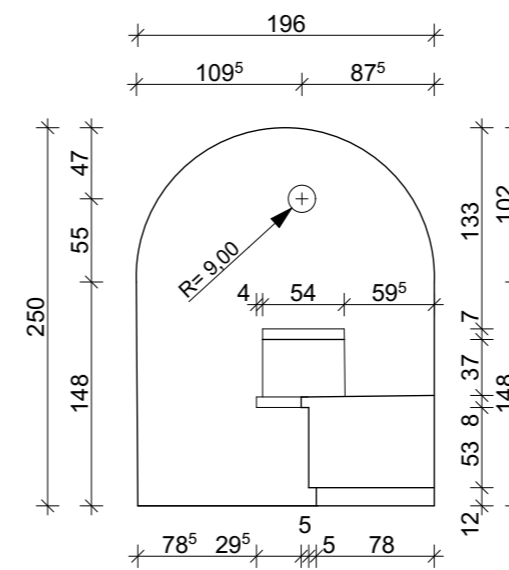
6.5.1 Innenwände



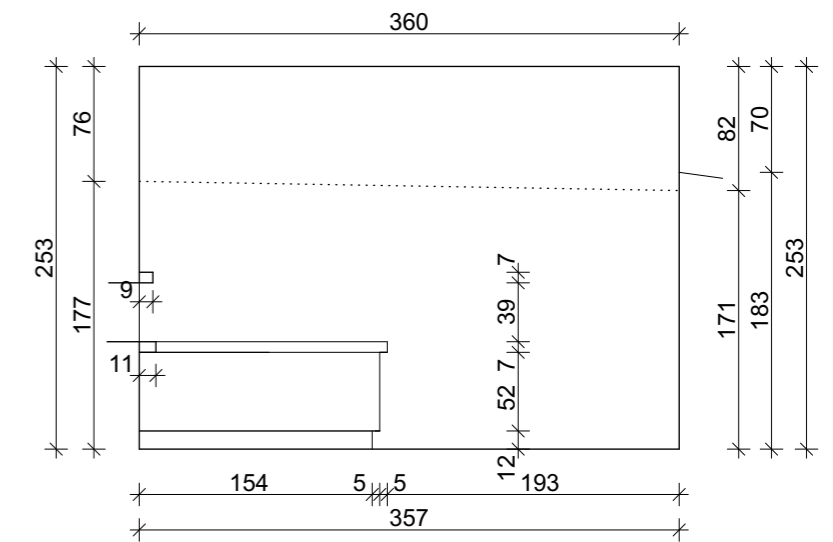
W1



W2



W3



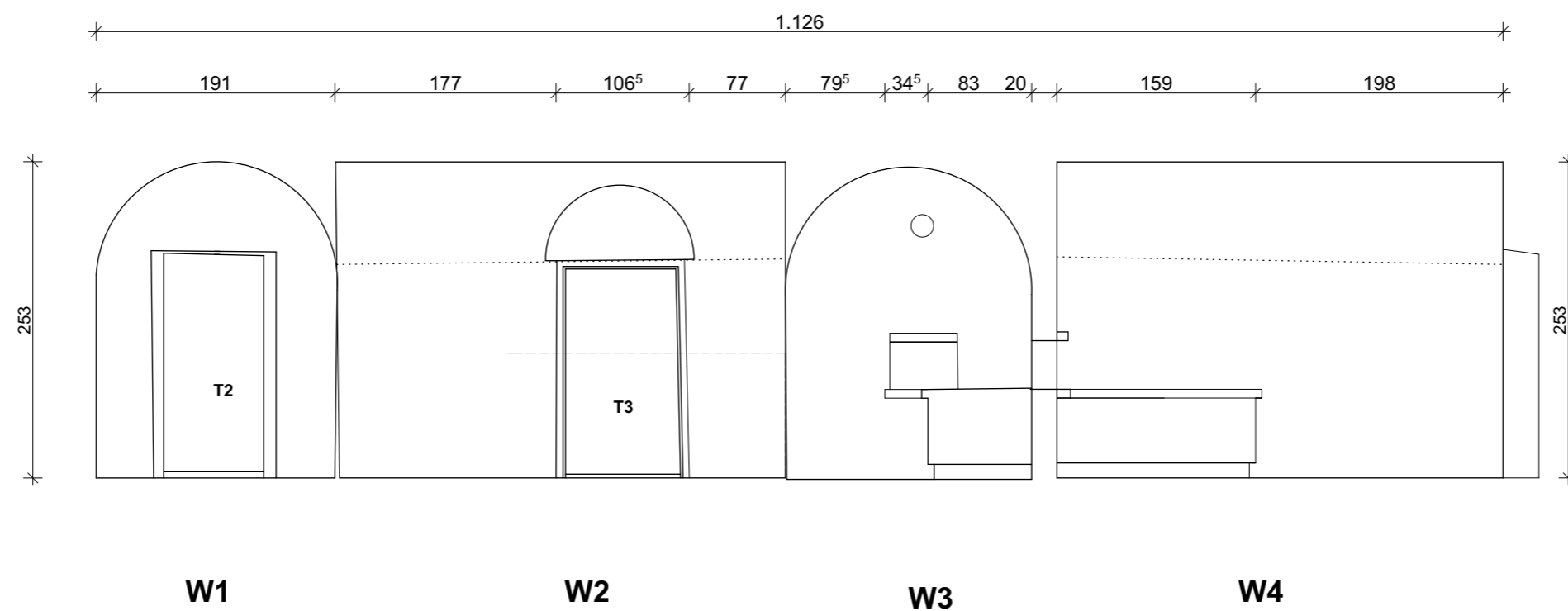
W4

M 1:50

6.5 Rauchküche



6.5.2 Wandabwicklung

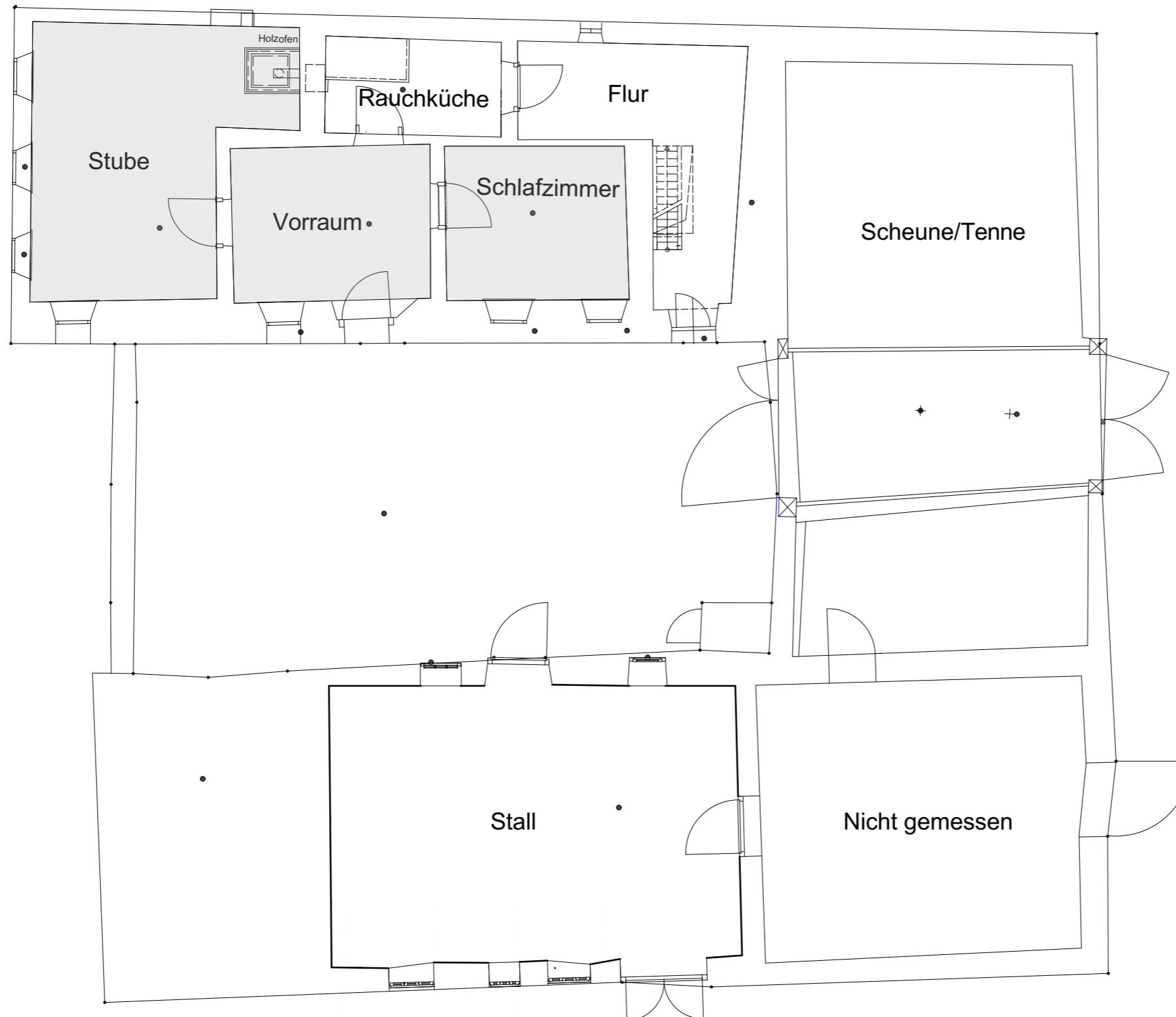


M 1:50

7 Schlafzimmer/Vorraum/Stube



7.1 Position

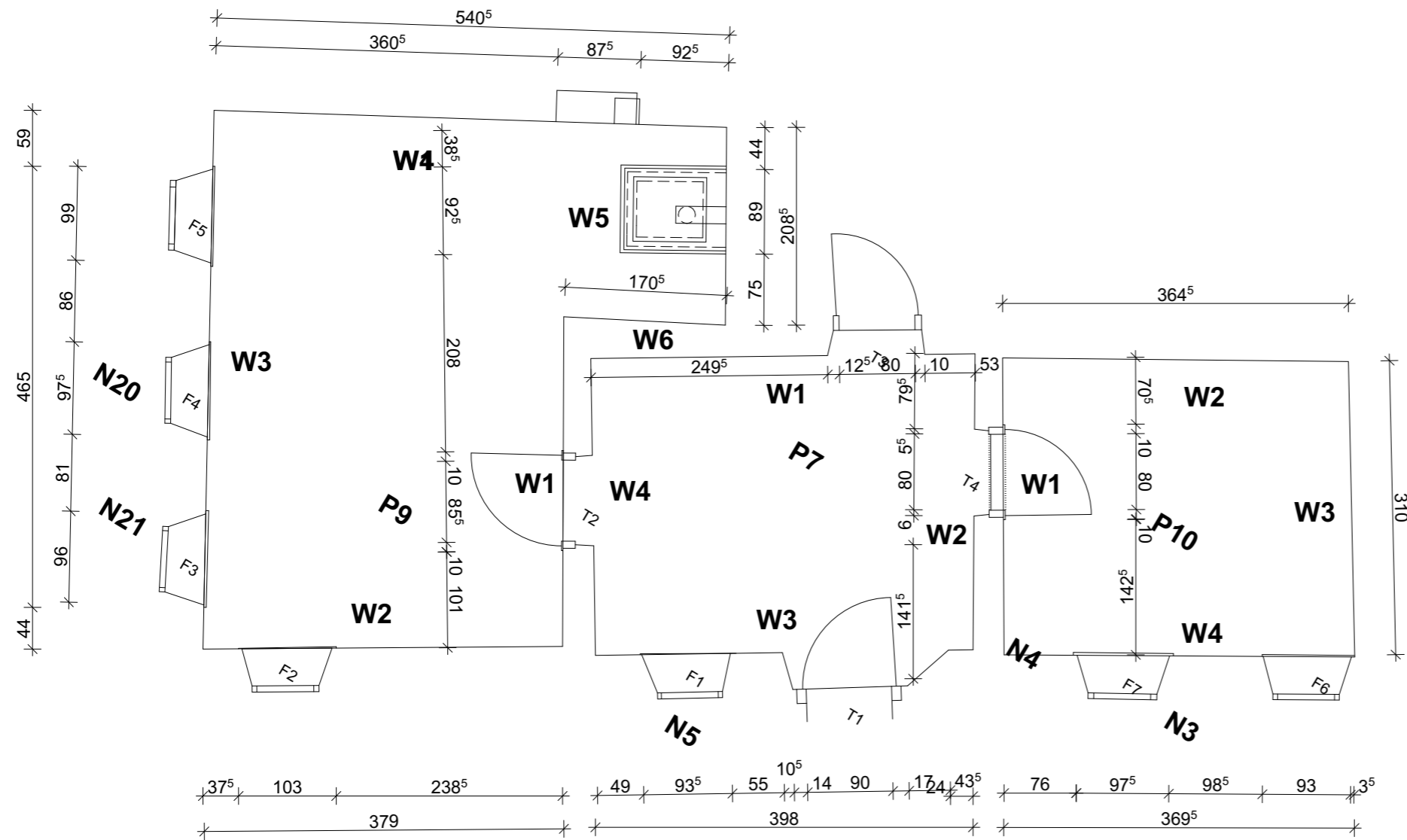



M 1:100

7 Schlafzimmer/Vorraum/Stube



7.2 Grundriss



Fensterliste:
 e:
 F1: 60/70 cm
 FPH: 80 cm
 F2: 60/70 cm
 FPH:
 F3: 60/70 cm
 FPH:
 F4: 60/70 cm
 FPH:
 F5: 60/70 cm
 FPH:
 F6: 60/70 cm
 FPH:
 F7: 60/70 cm
 FPH:

Türliste:
 T1: 80/200 cm
 STUK: 167,5 cm
 Schwelle:
 T2: 5,5 cm
 T3: 80/200 cm
 STUK: 178 cm
 Schwelle: 1 cm
 T4: 80/200 cm
 STUK: 173,5 cm
 Schwelle: 2,5 cm
 T4: 80/200 cm
 STUK: 181 cm
 Schwelle: 2cm

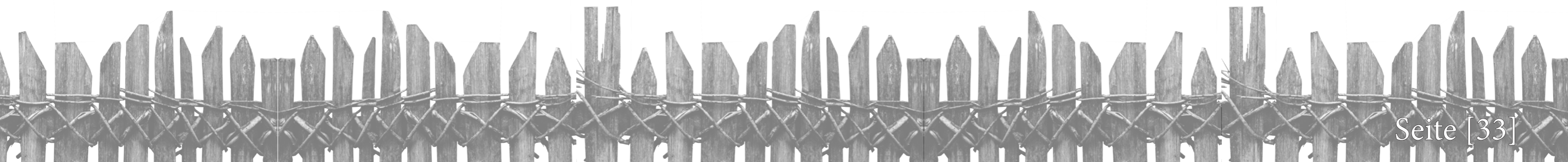
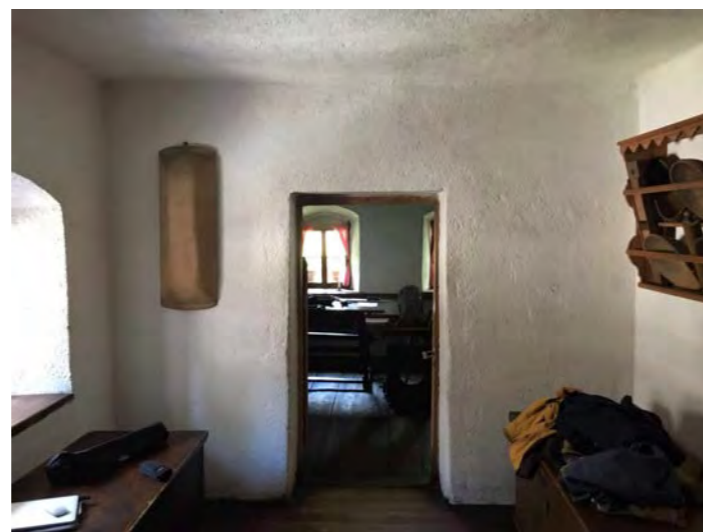


M 1:50

7.3 Vorraum



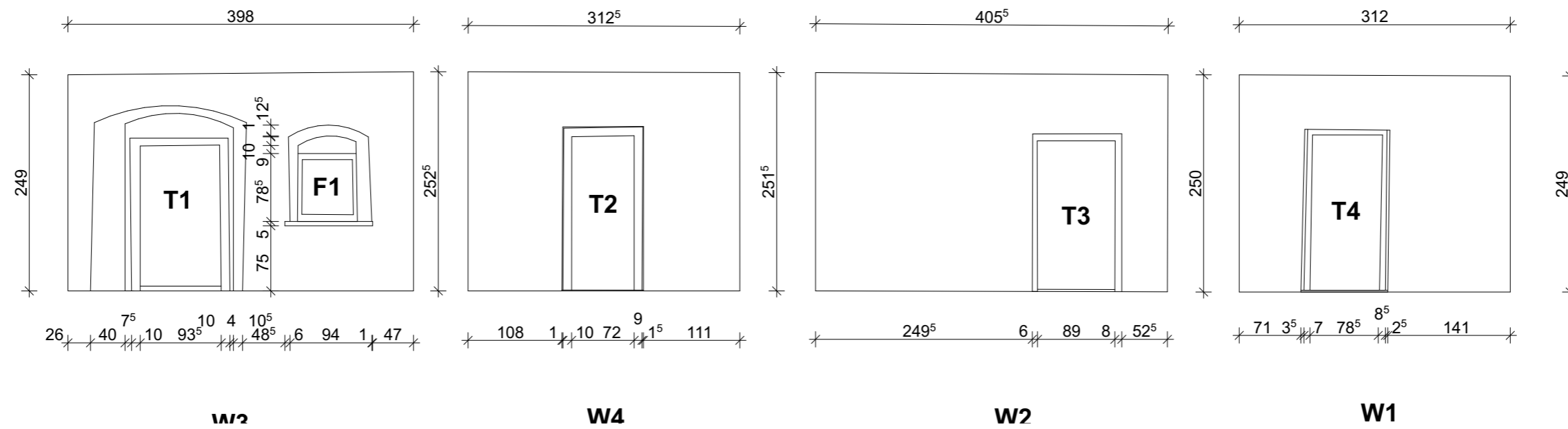
7.3.1 Fotos



7.3 Vorraum



7.3.2 Innenwände

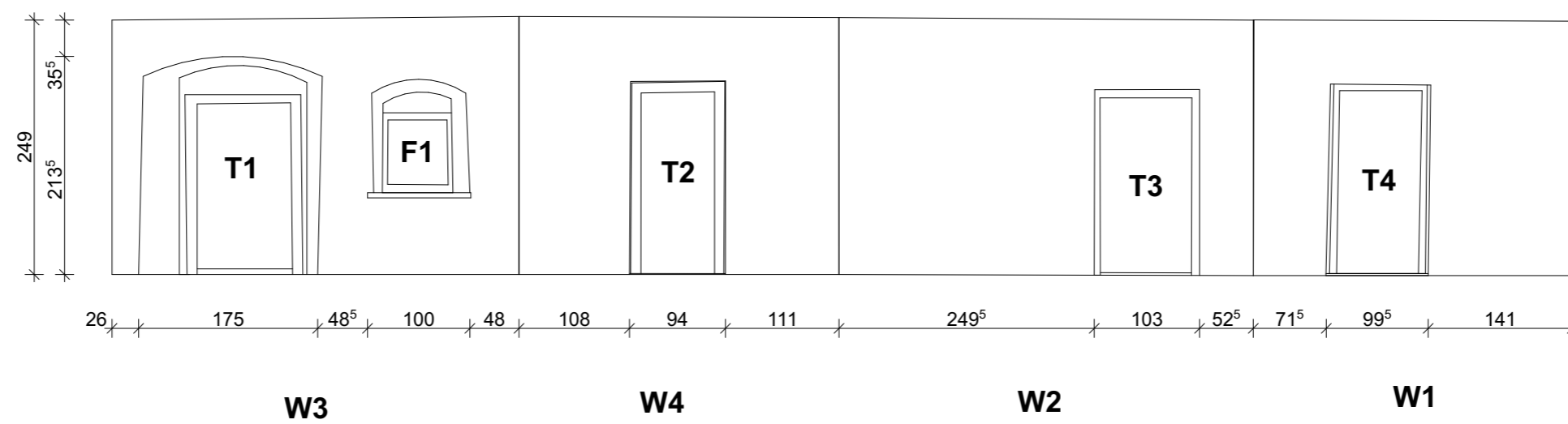


M 1:50

7.3 Vorraum



7.3.3 Wandabwicklung



M 1:50

7.4 Stube



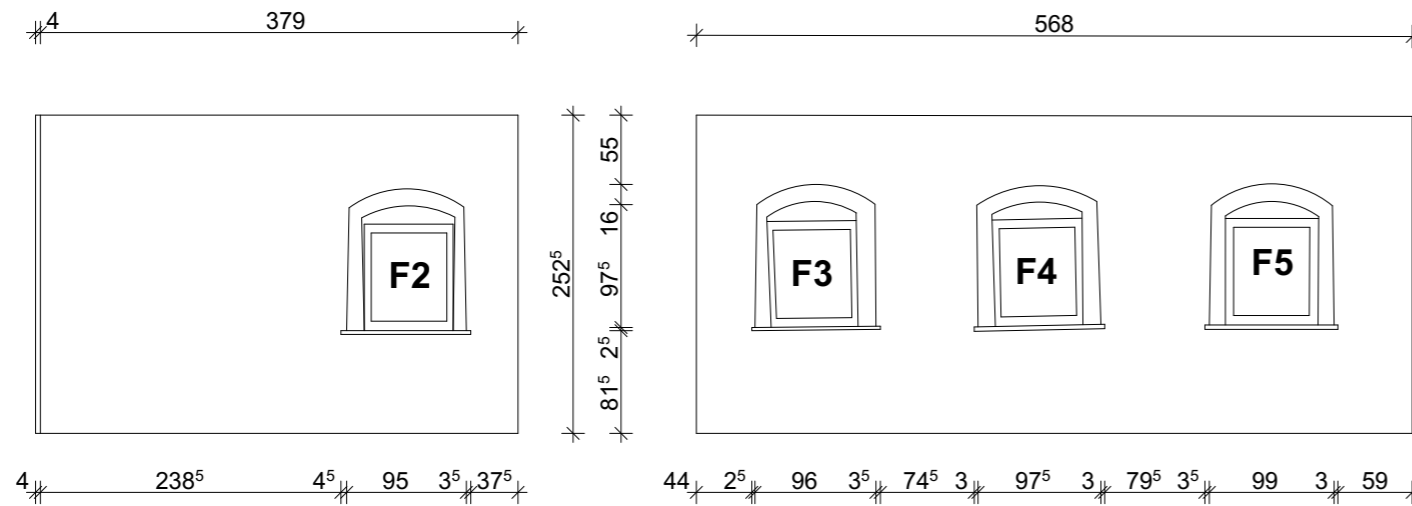
7.4.1 Fotos



7.4 Stube

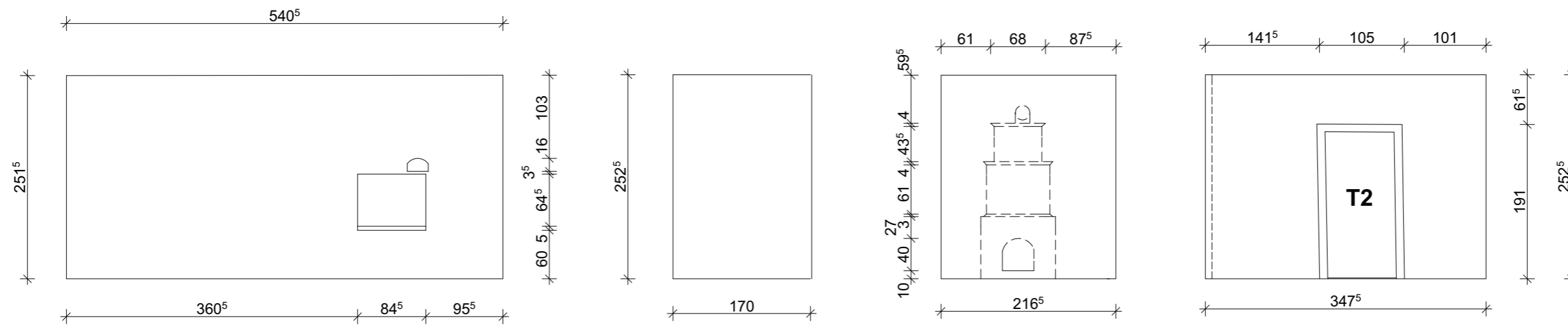


7.4.2 Innenwände



W2

W3



W4

W5

W6

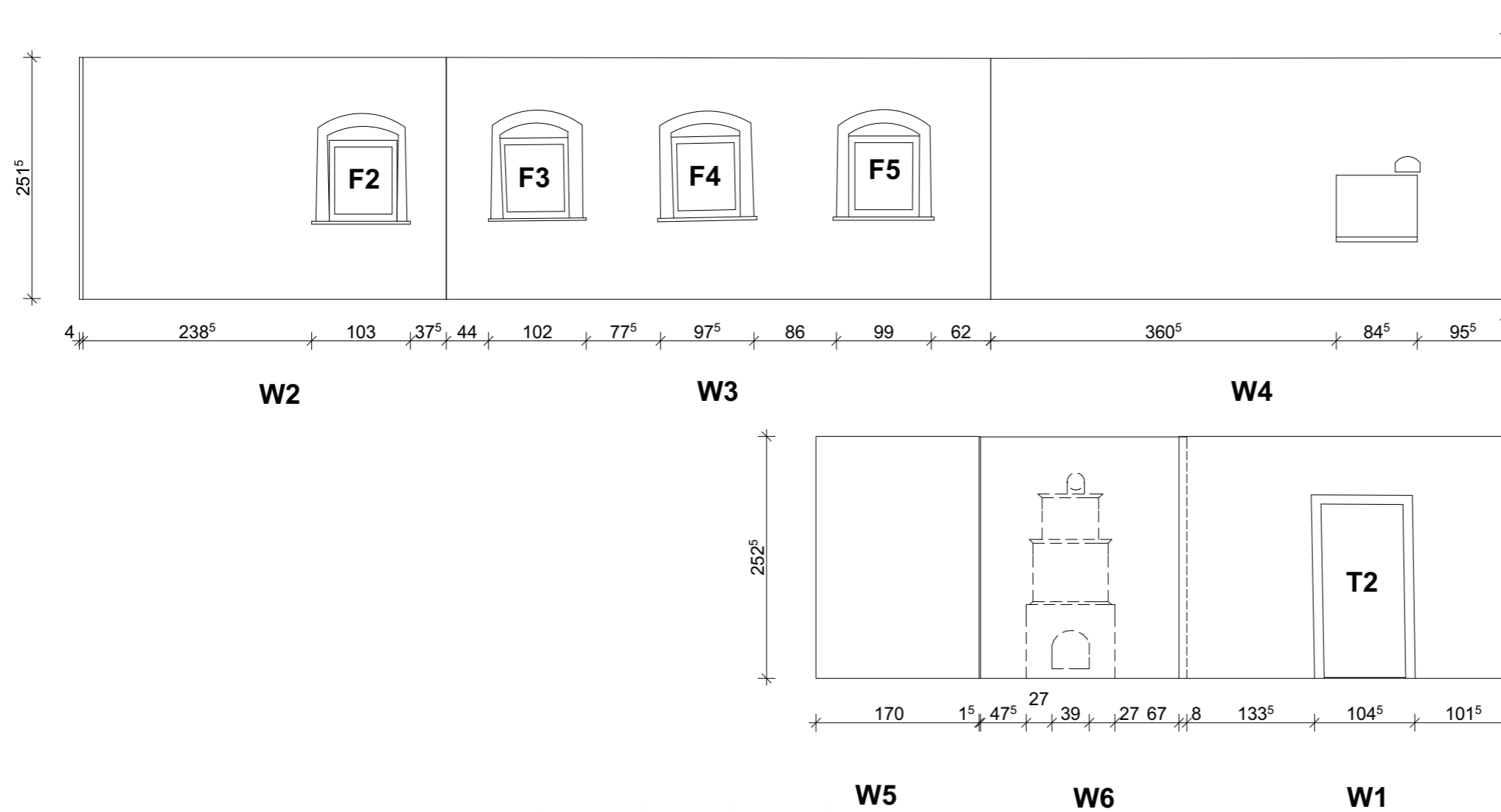
W1

M 1:50

7.4 Stube



7.4.3 Wandabwicklung

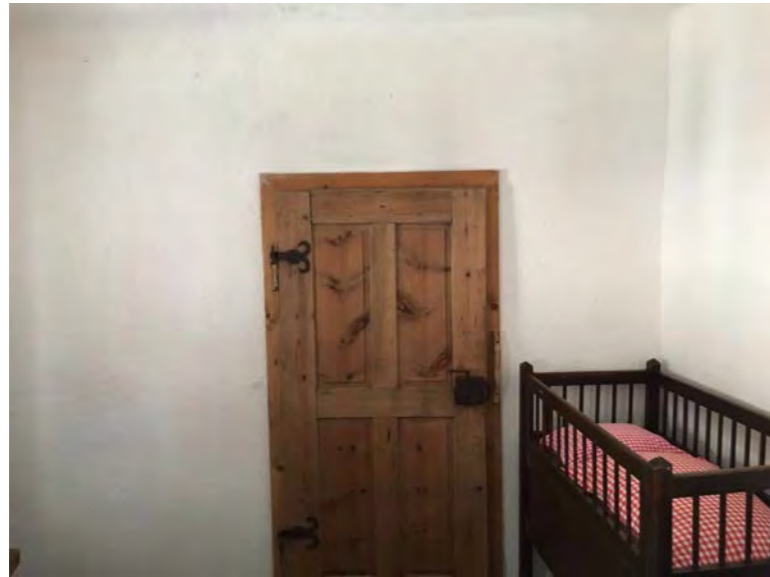


M 1:50

7.5 Schlafzimmer



7.5.1 Fotos

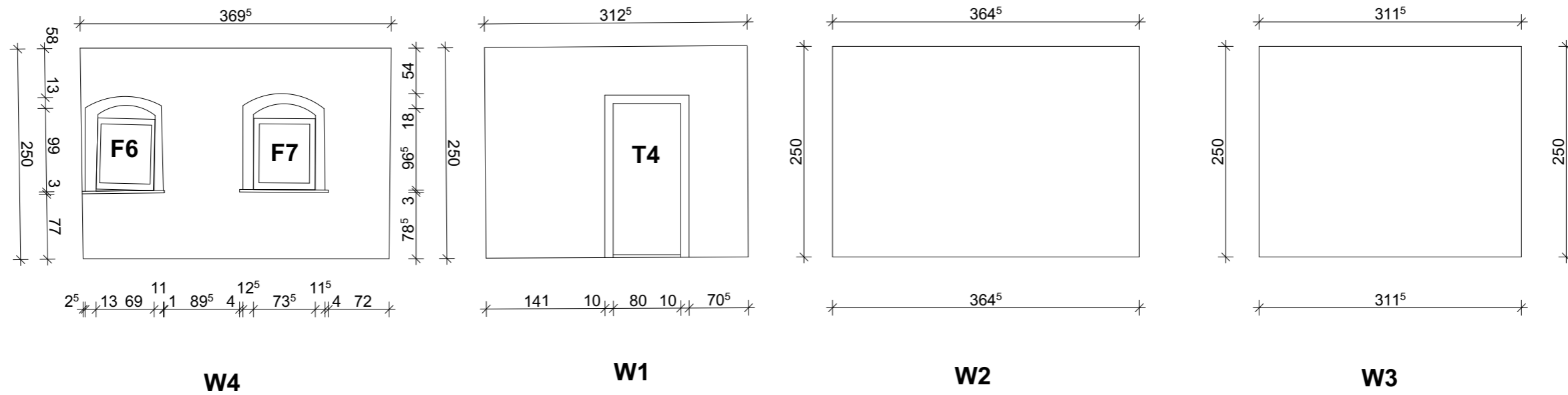


M 1:50

7.5 Schlafzimmer



7.5.2 Innenwände

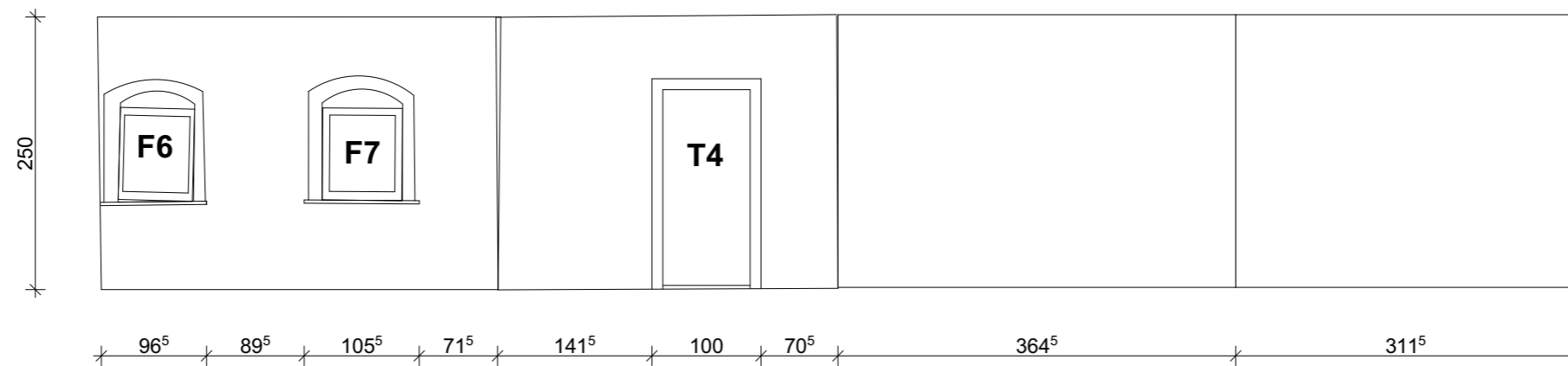


M 1:50

7.5 Schlafzimmer



7.5.3 Wandabwicklung



M 1:50

8.1 Monobild 1



Originalbild



Ergebnisse Ausgleich der Transformationsparameter

Verbesserungen			Größe des Ausgangsbildes	
Punkte	vX2 [cm]	vZ2 [cm]	Breite	Höhe
132	-0.267	1.325	3008	2000
133	-0.377	0.821		
139	1.264	-0.161		
141	0.723	1.941		
140	-3.942	-0.911		
137	2.599	-3.015		

Größe des Zielbildes
Breite: 3008
Höhe: 1939

Maßstab, Auflösung
Maßstab 1: 10.00
Auflösung: 33 dpi

Größe eines Pixel
1 Pixel = 0.775 cm

Farben interpolieren

Bild entzerrt

8.2 Monobild 2



Originalbild



Ergebnisse Ausgleich der Transformationsparameter

Verbesserungen			Größe des Ausgangsbildes	
Punkte	vX2 [cm]	vZ2 [cm]	Breite	Höhe
211	1.421	3.497	3008	2000
212	-0.446	-2.380		
213	-1.617	1.346		
214	2.842	-1.479		
215	-1.490	1.210		
216	-0.710	-2.195		

Größe des Zielbildes
Breite: 3008
Höhe: 1894

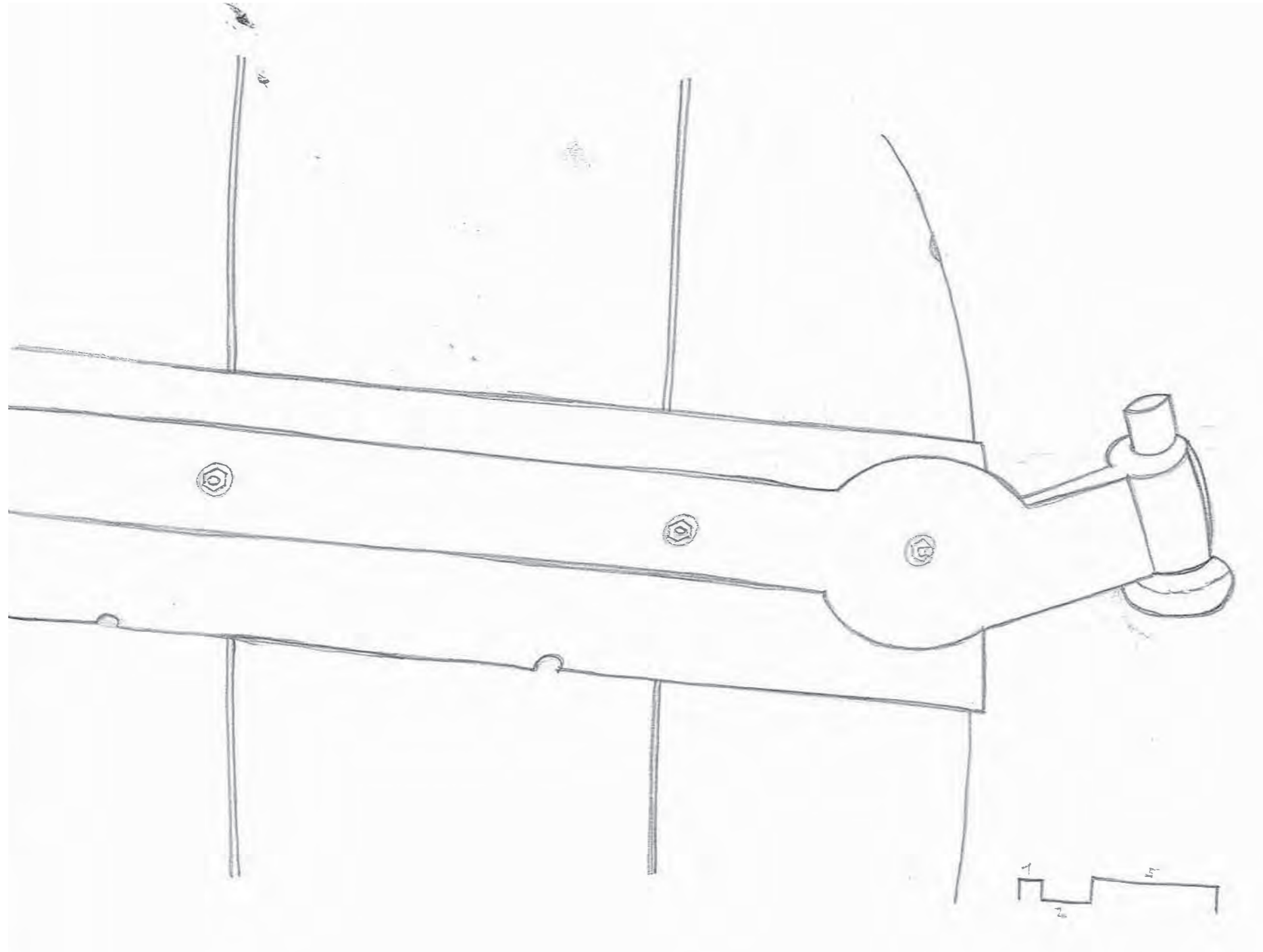
Maßstab, Auflösung
Maßstab 1: 10.00
Auflösung: 56 dpi

Größe eines Pixel
1 Pixel = 0.455 cm

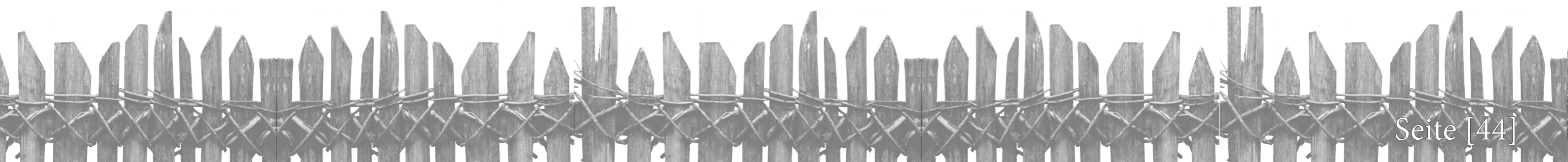
Farben interpolieren

Bild entzerrt

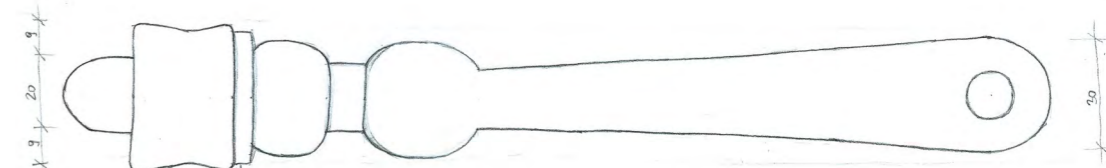
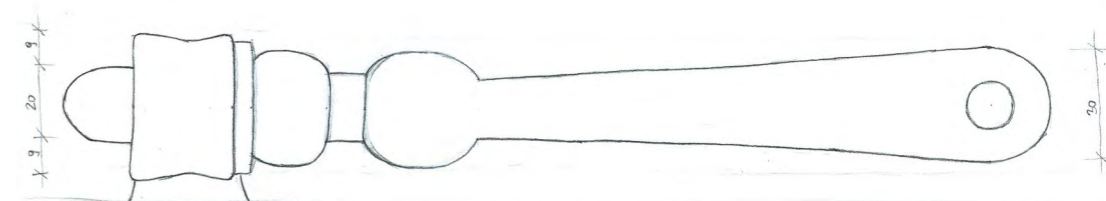
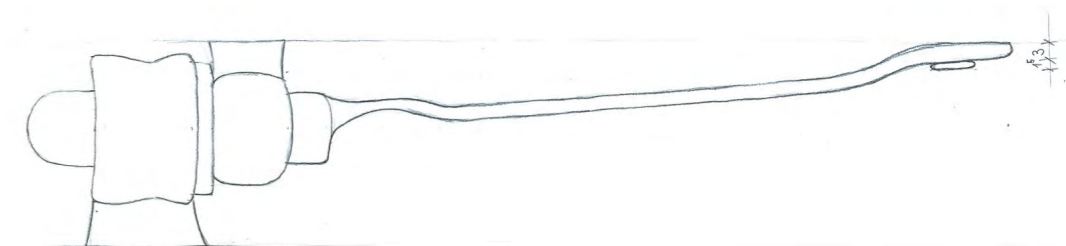
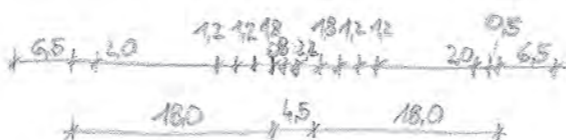
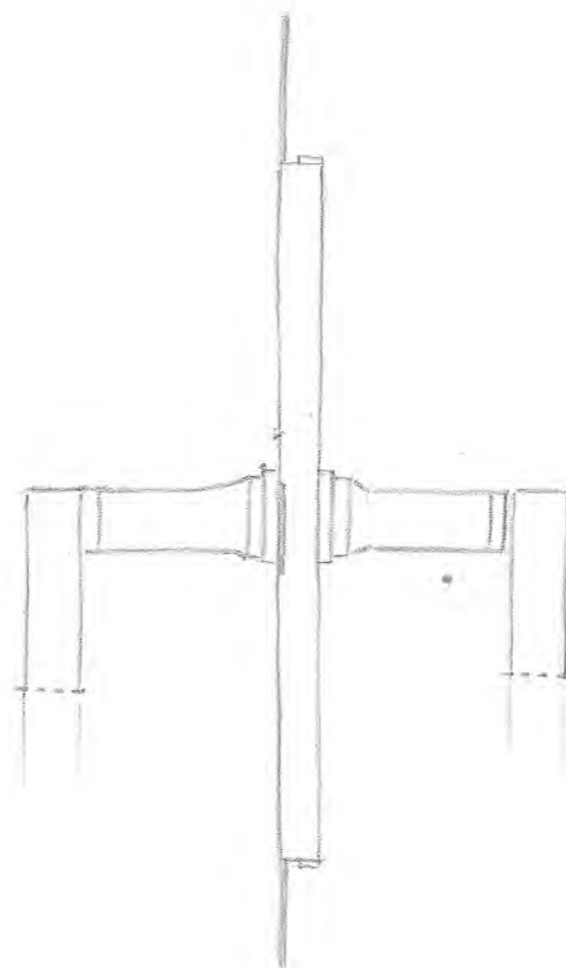
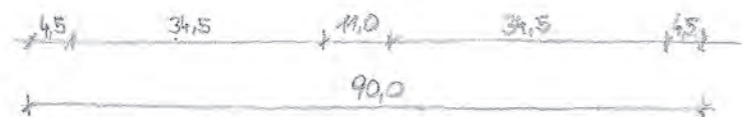
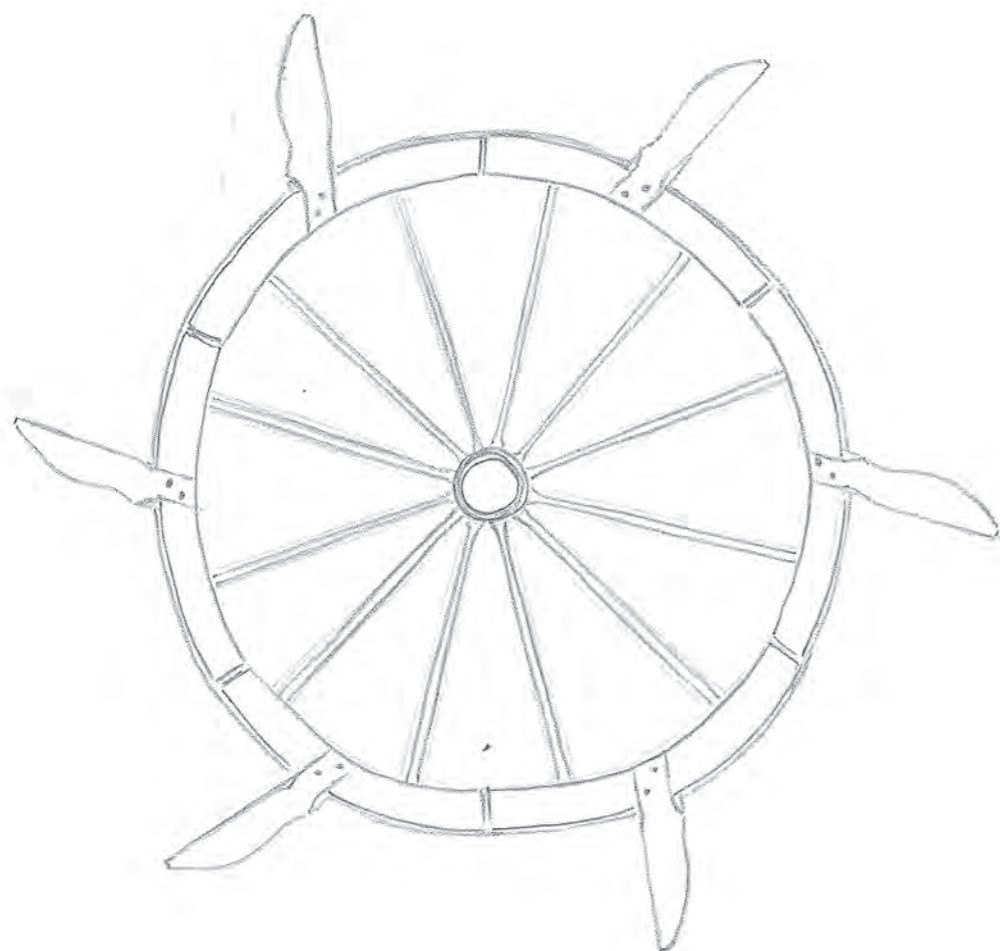




M 1:2



9 Details

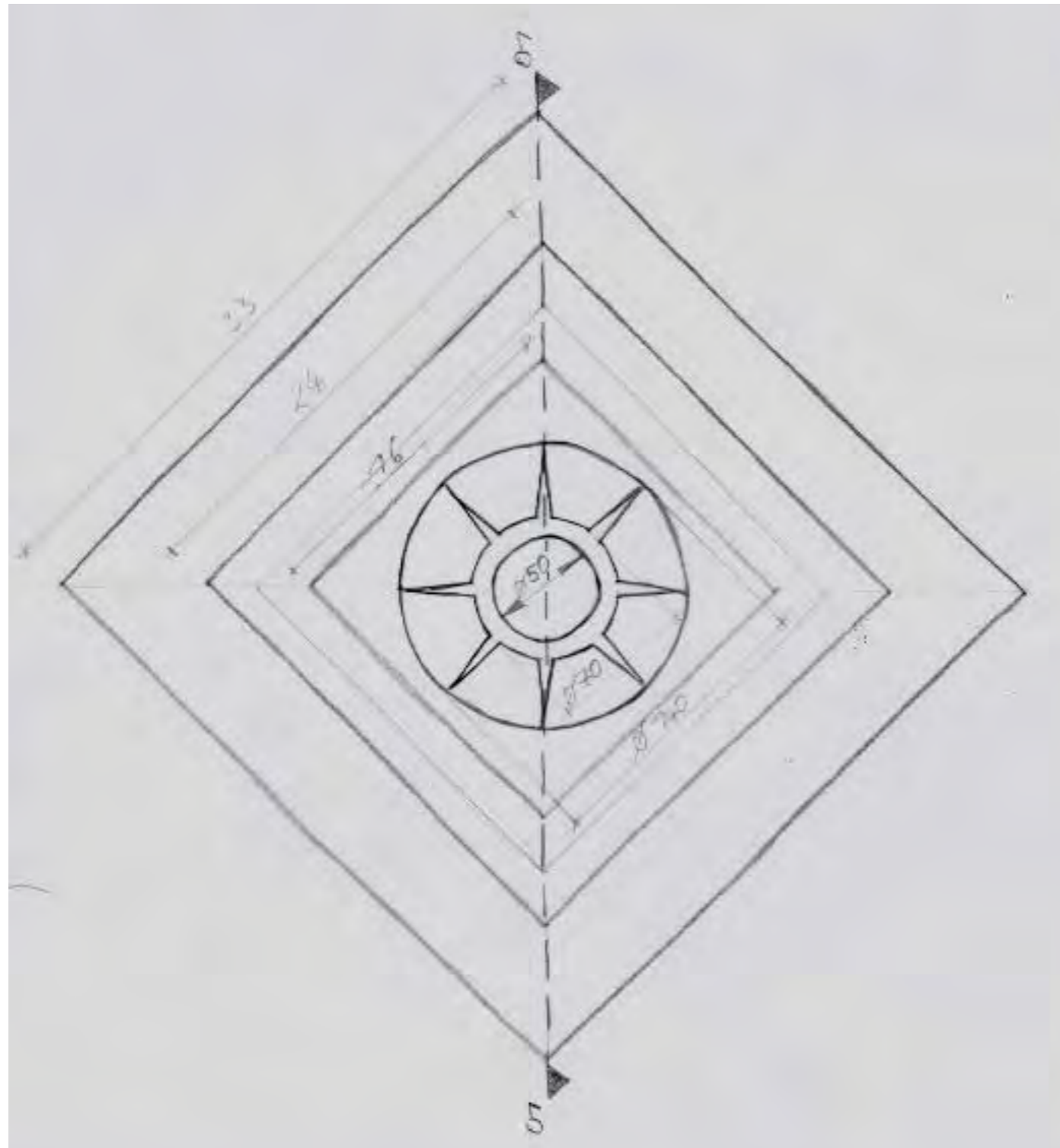


M 1:10

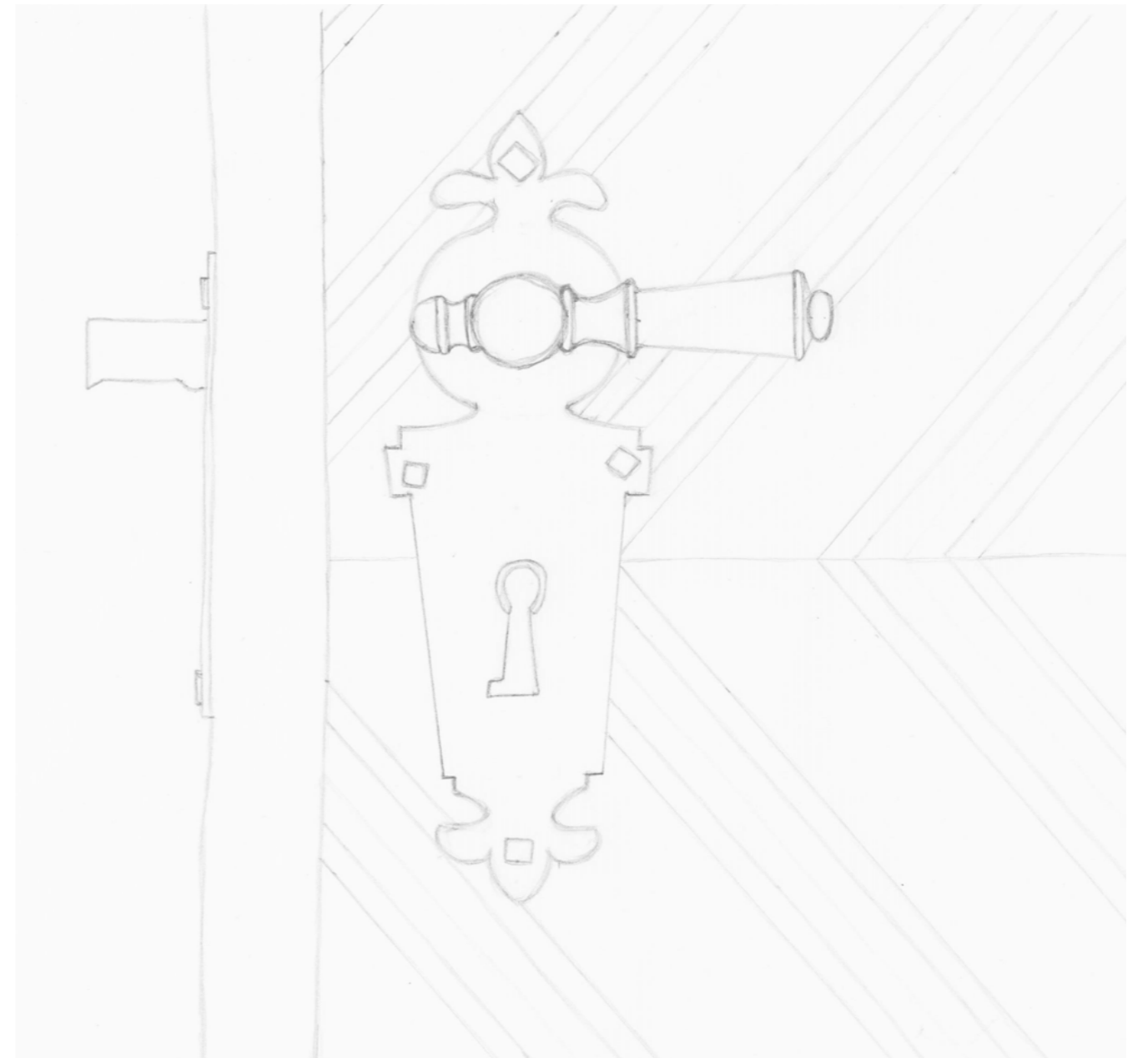
M 1:2



9 Details



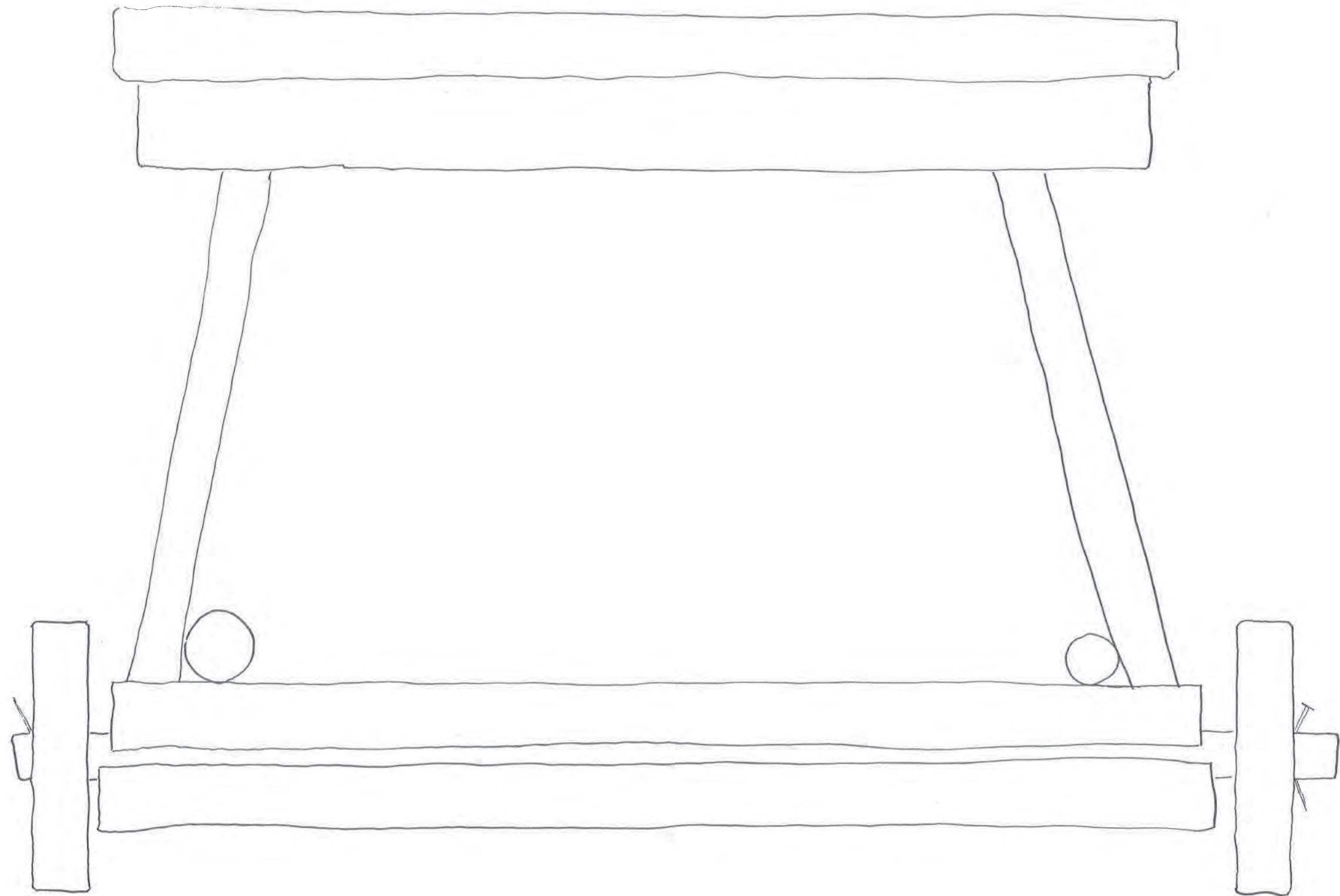
M 1:3



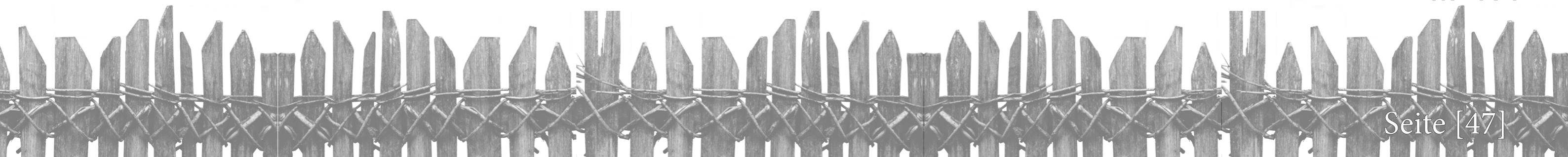
M 1:2



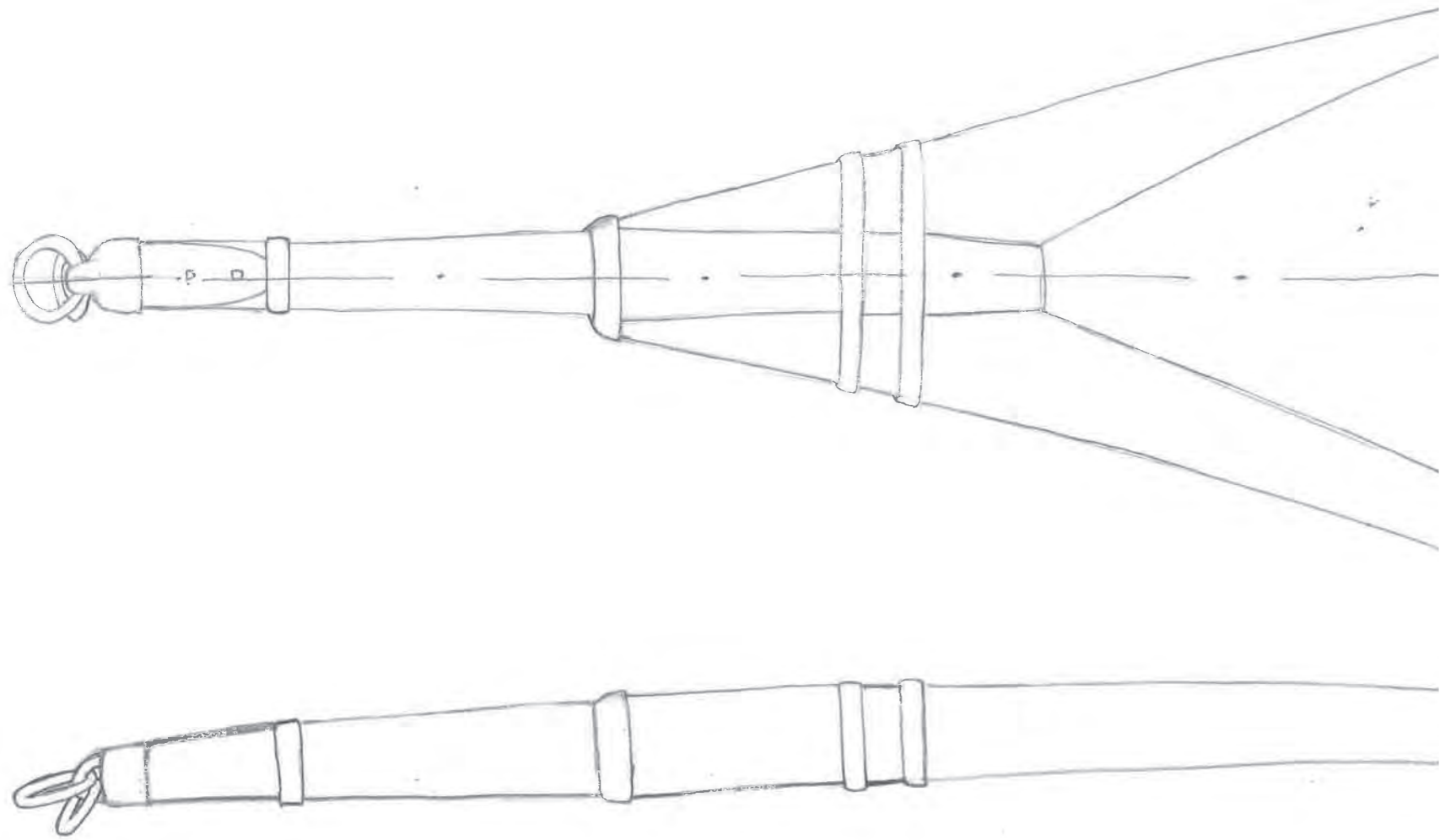
9 Details



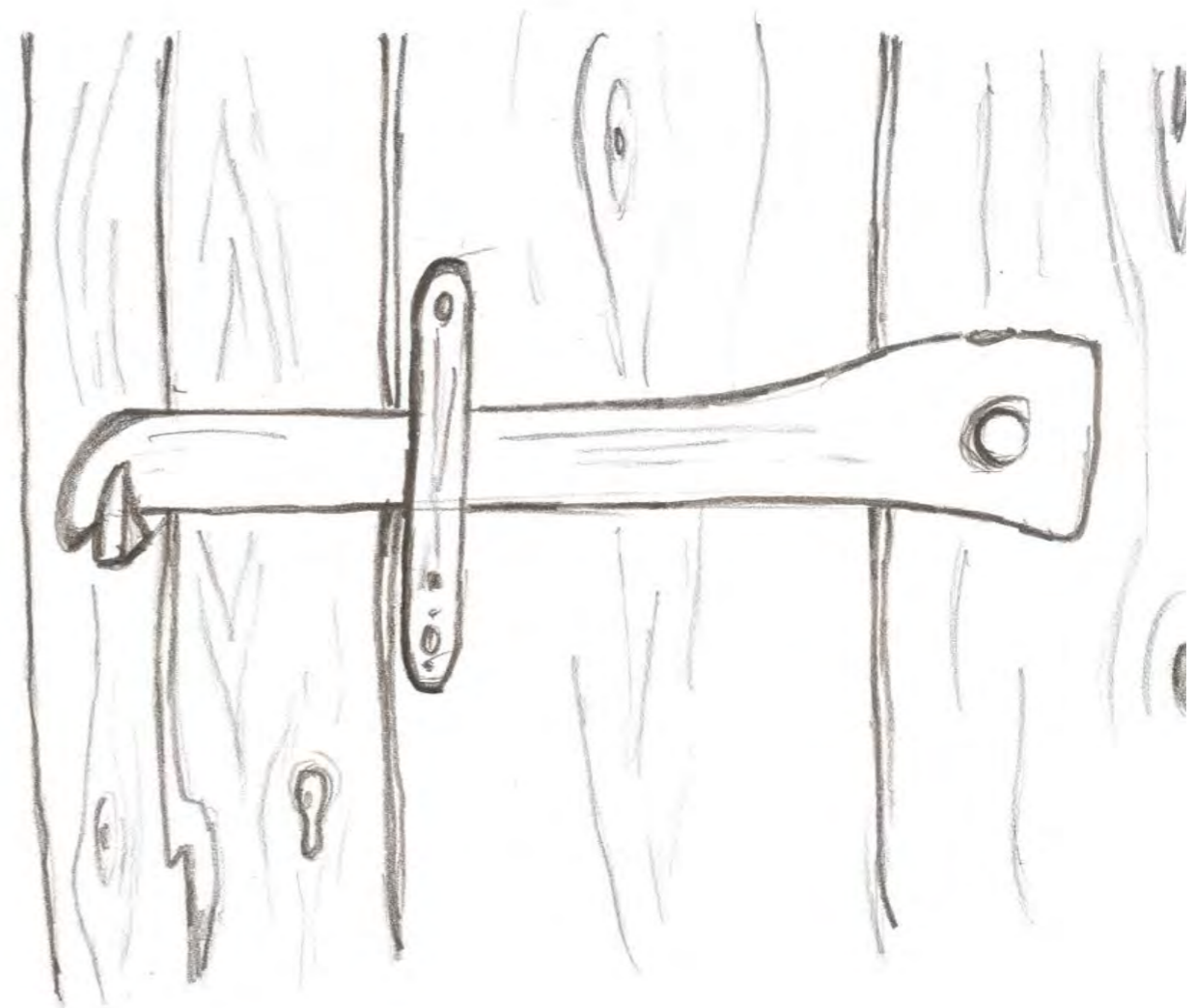
M 1:4



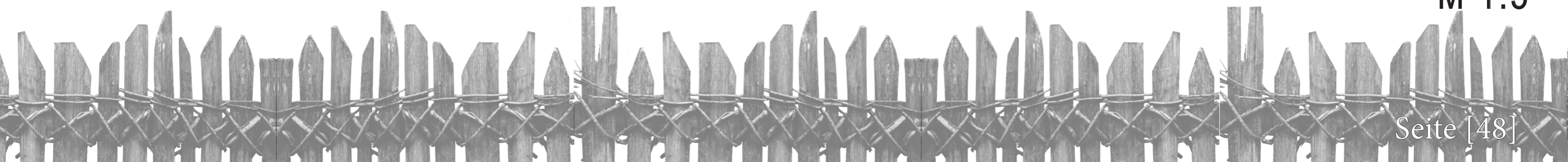
9 Details



M 1:5



M 1:5



10 Projektbeteiligte



Theodolitgruppe

Baker Alexander
Kalteis Simon
Krausler Sandra



Distogruppe1

Losgott Markus
Kloibhofer Johannes
Wührleitner Verena



Distogruppe4

Höfler Regina
Klapsch Christian
Perumprayil Geo



Finalgruppe

Peterherr Lisa
Shields Jennifer
Sorko Katharina



Distogruppe2

Baumgartner Marco
Kljajic Manuela
Perr Miriam



Distogruppe3

Rainer Florian
Rogl Thomas
Weithenthaler Gabriel



Fotogruppe

Maurer Martin
Paschek Andreas



Betreuer der Projektarbeit

DI (FH) Katja Helms, M.A.
DI Gerhard Krajicek
DI Eva Maria Egger

8.1 Monobild 1



Originalbild



Ergebnisse Ausgleich der Transformationsparameter

Verbesserungen			Größe des Ausgangsbildes	
Punkte	vX2 [cm]	vZ2 [cm]	Breite	Höhe
132	-0.267	1.325	3008	2000
133	-0.377	0.821		
139	1.264	-0.161		
141	0.723	1.941		
140	-3.942	-0.911		
137	2.599	-3.015		

Größe des Zielbildes
Breite: 3008
Höhe: 1939

Maßstab, Auflösung
Maßstab 1: 10.00
Auflösung: 33 dpi

Größe eines Pixel
1 Pixel = 0.775 cm

Farben interpolieren

<< Zurück

[ESC] , [Abbruch]

Bild entzerrt

8.2 Monobild 2



Originalbild



Ergebnisse Ausgleich der Transformationsparameter

Verbesserungen			Größe des Ausgangsbildes	
Punkte	vX2 [cm]	vZ2 [cm]	Breite	Höhe
211	1.421	3.497	3008	2000
212	-0.446	-2.380		
213	-1.617	1.346		
214	2.842	-1.479		
215	-1.490	1.210		
216	-0.710	-2.195		

Größe des Zielbildes
Breite: 3008
Höhe: 1894

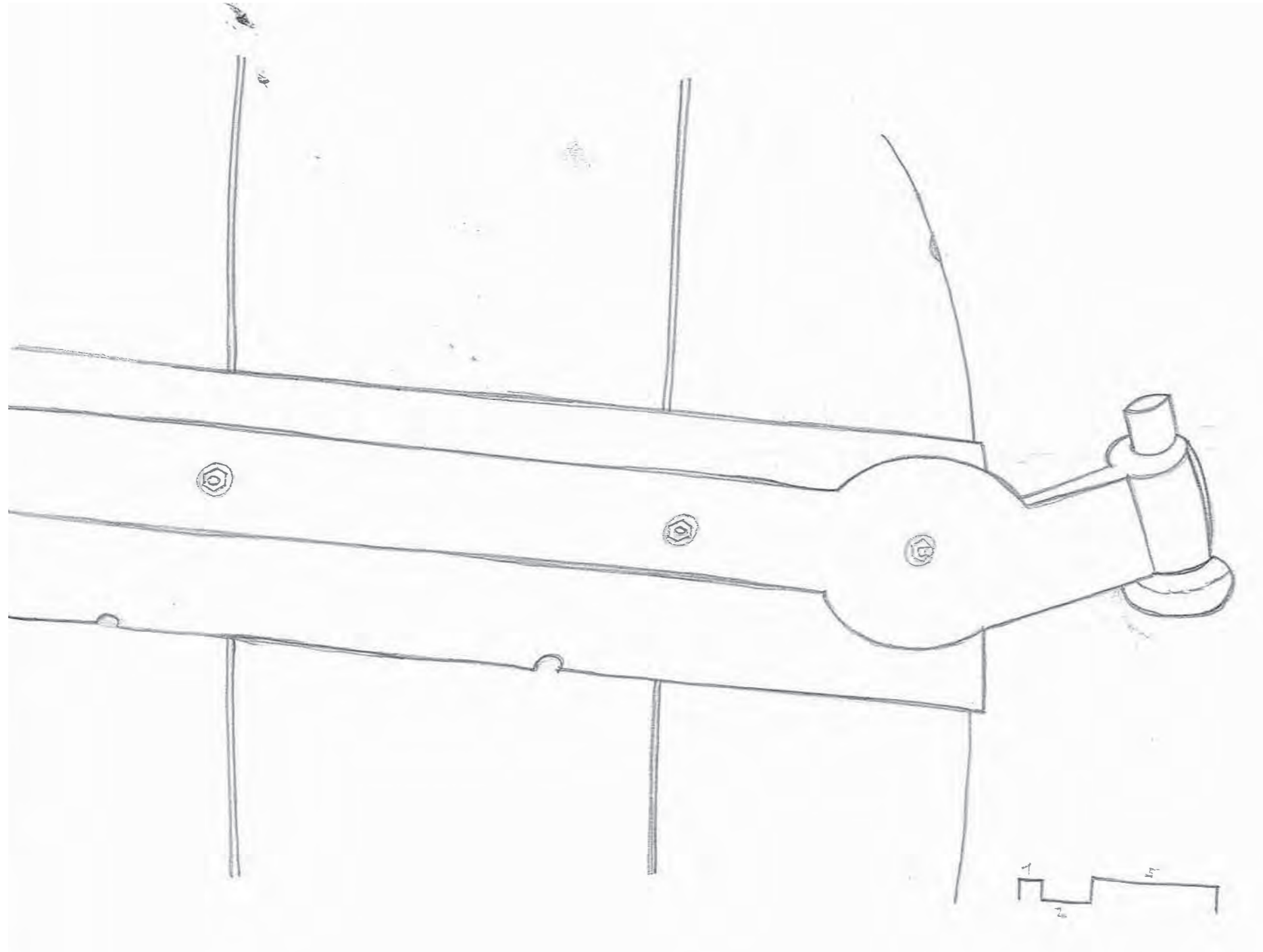
Maßstab, Auflösung
Maßstab 1: 10.00
Auflösung: 56 dpi

Größe eines Pixel
1 Pixel = 0.455 cm

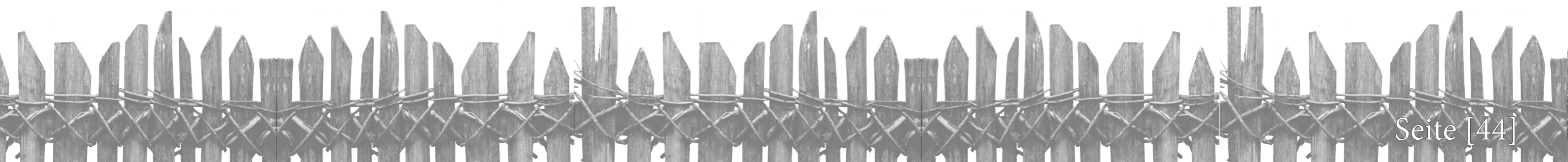
Farben interpolieren

Bild entzerrt

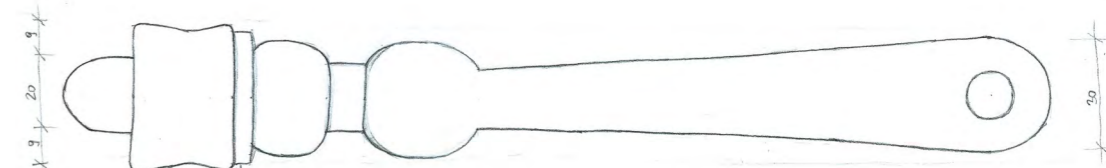
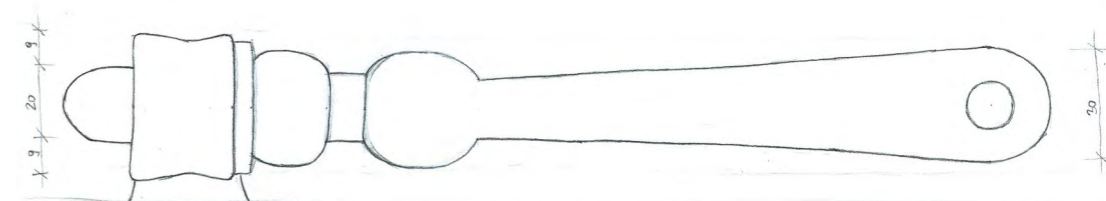
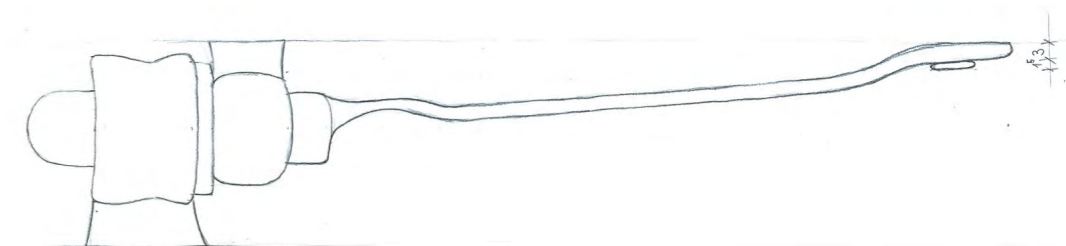
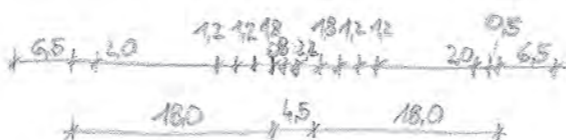
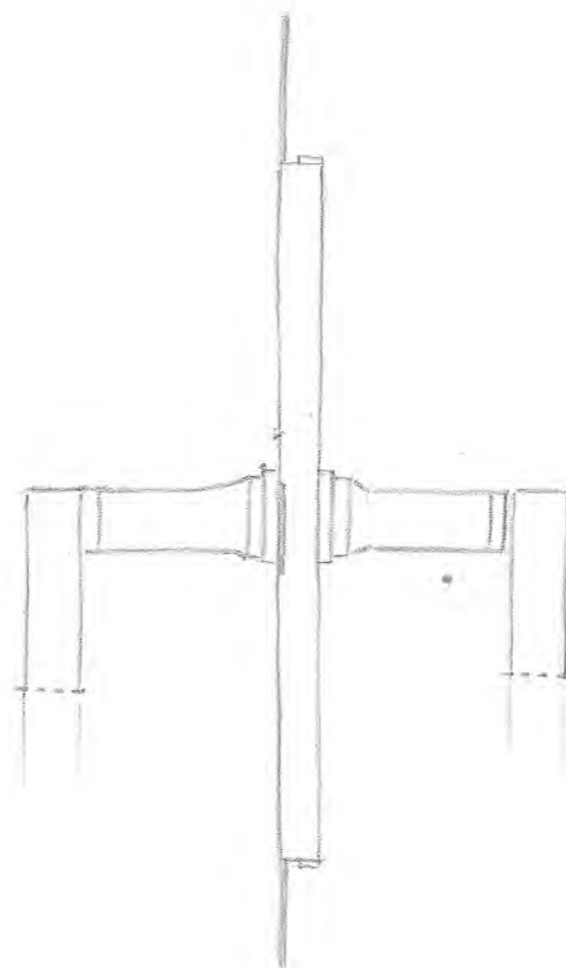
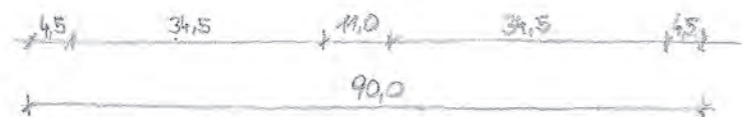
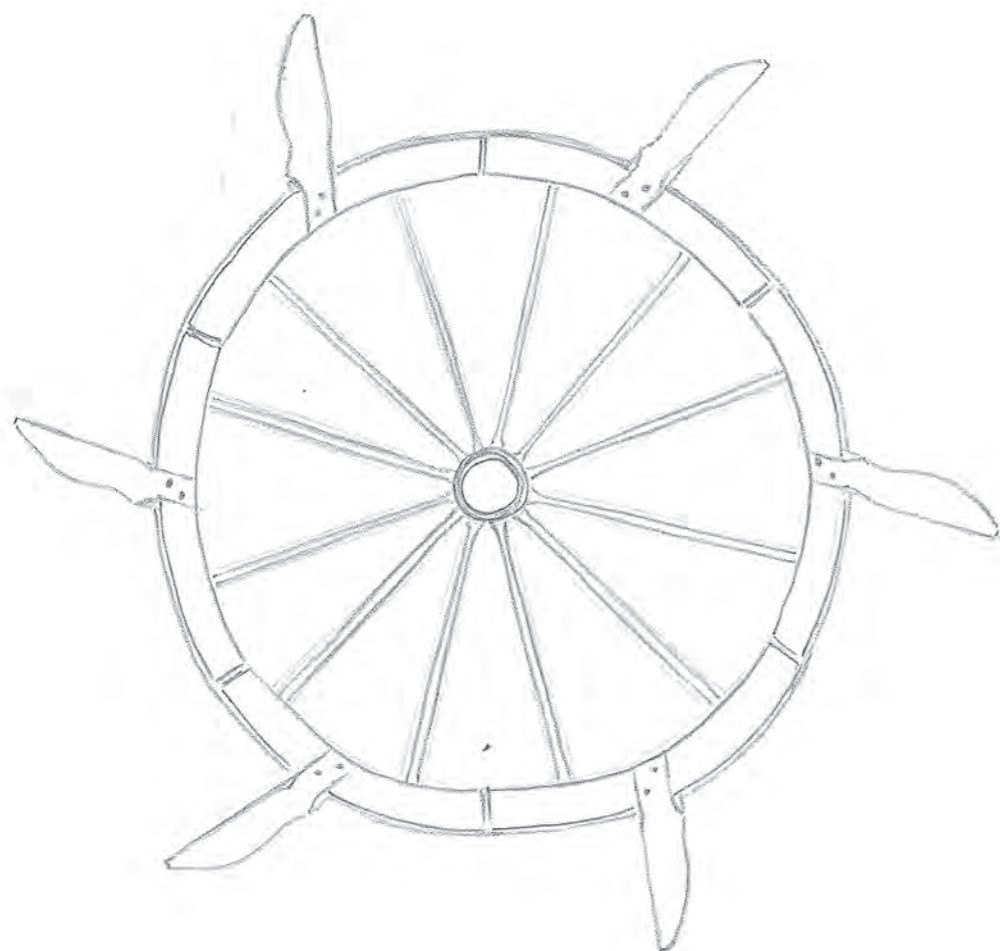




M 1:2



9 Details

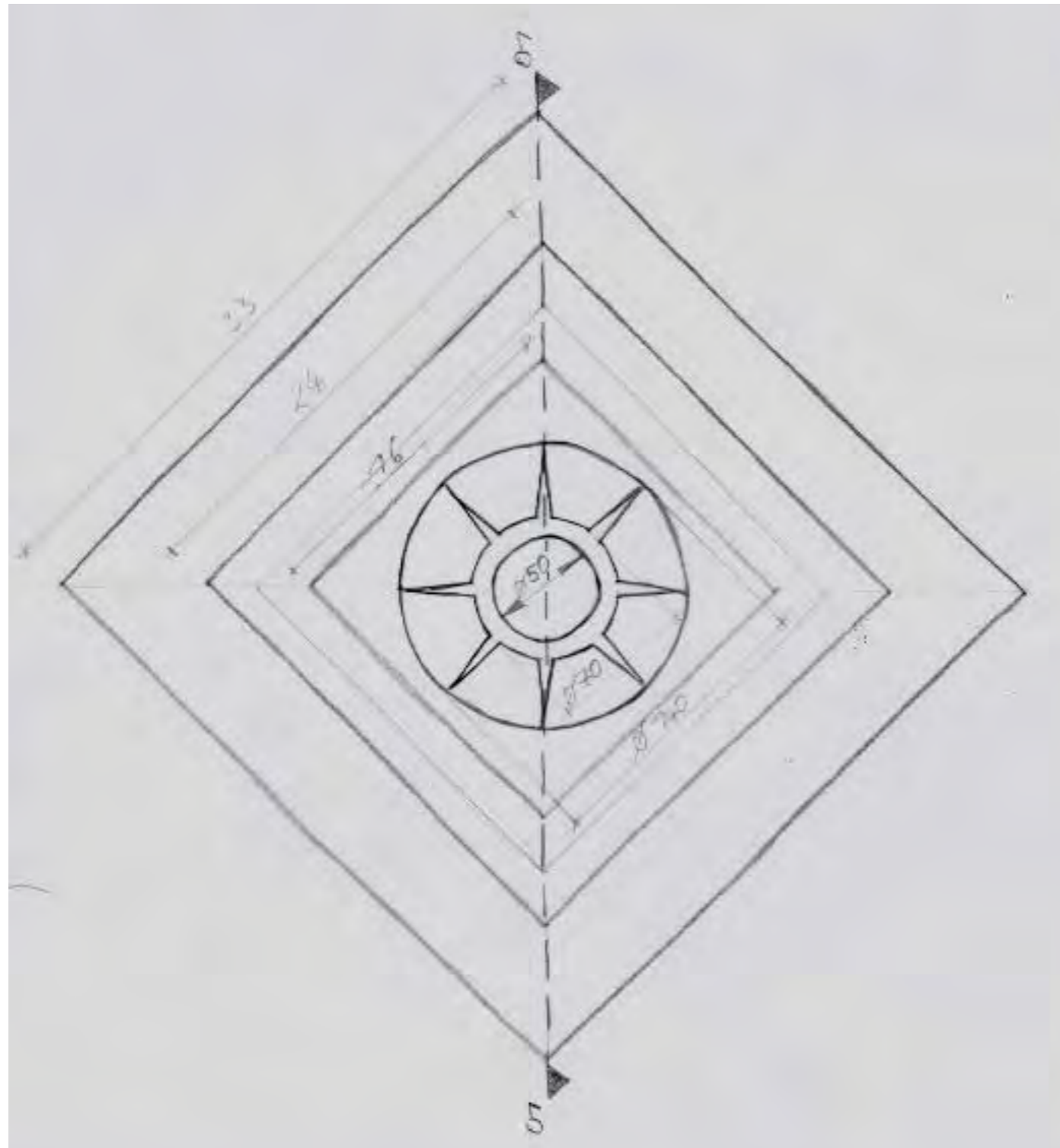


M 1:10

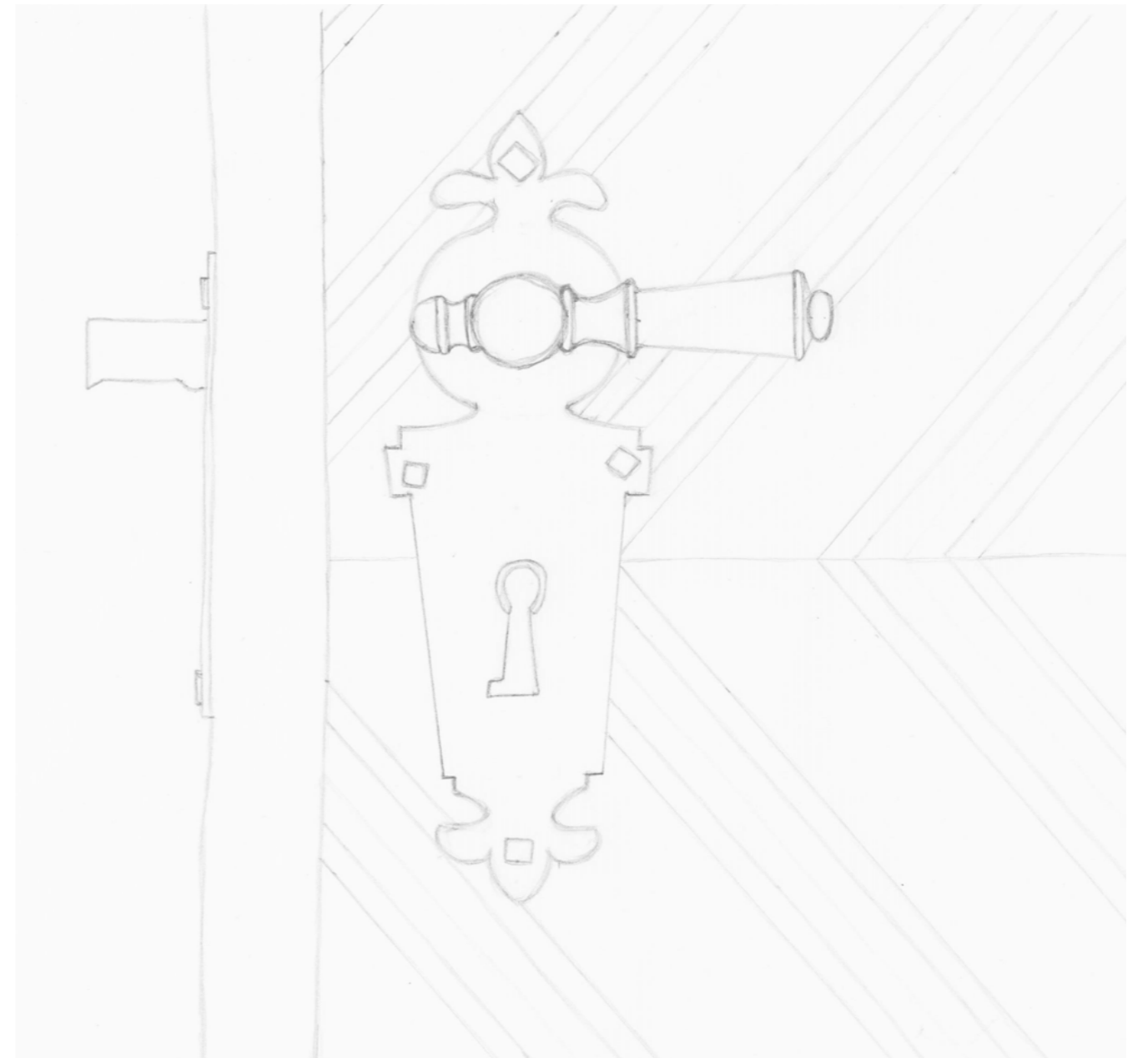
M 1:2



9 Details



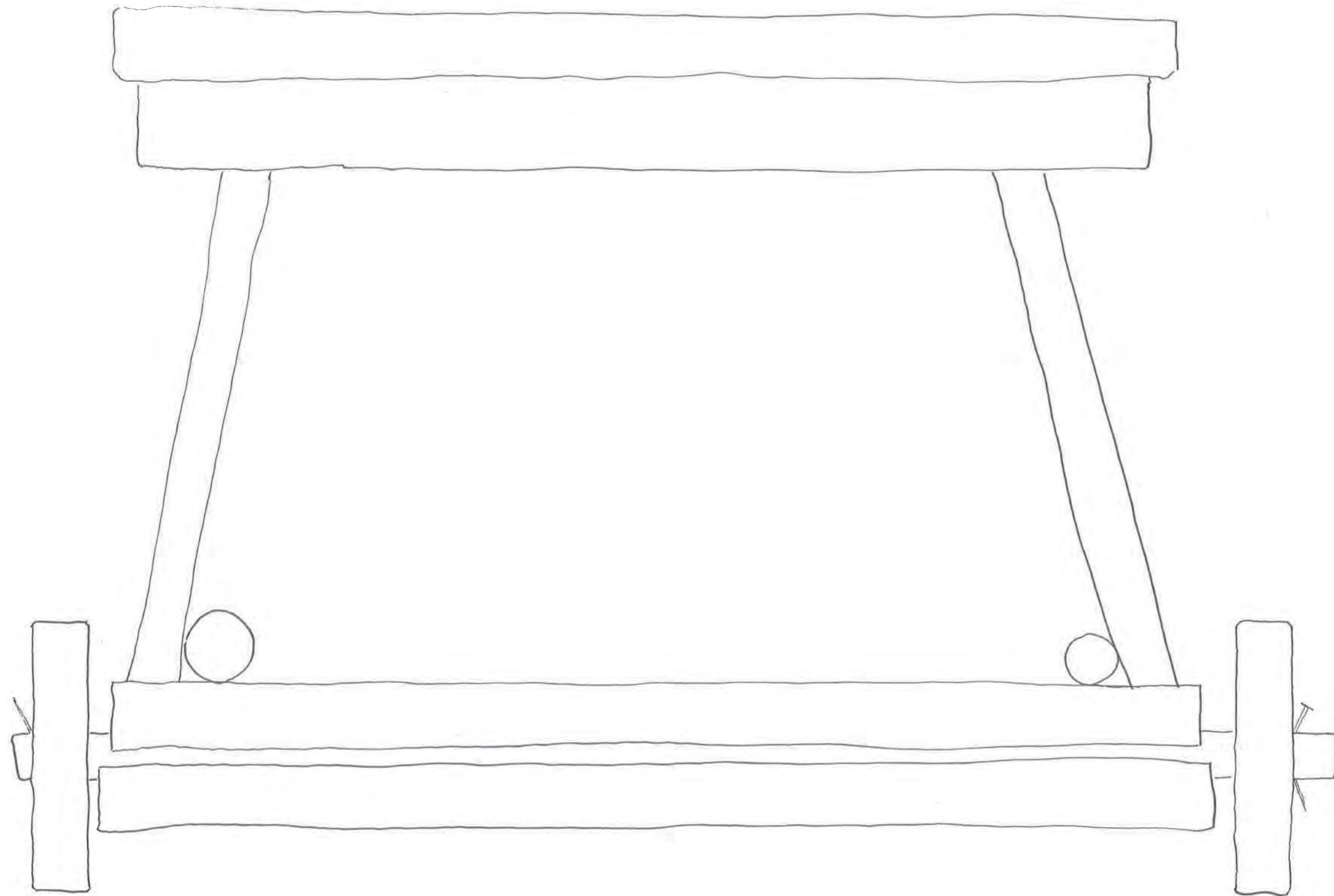
M 1:3



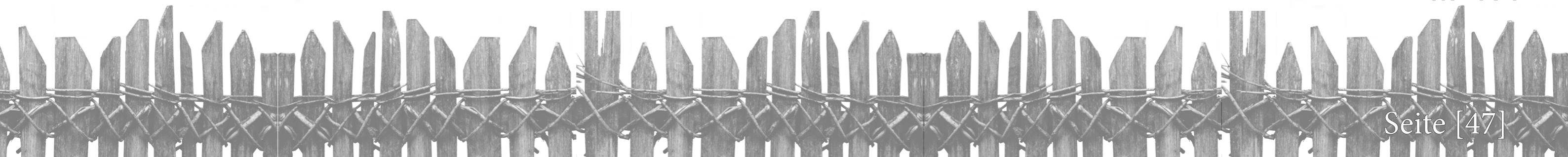
M 1:2



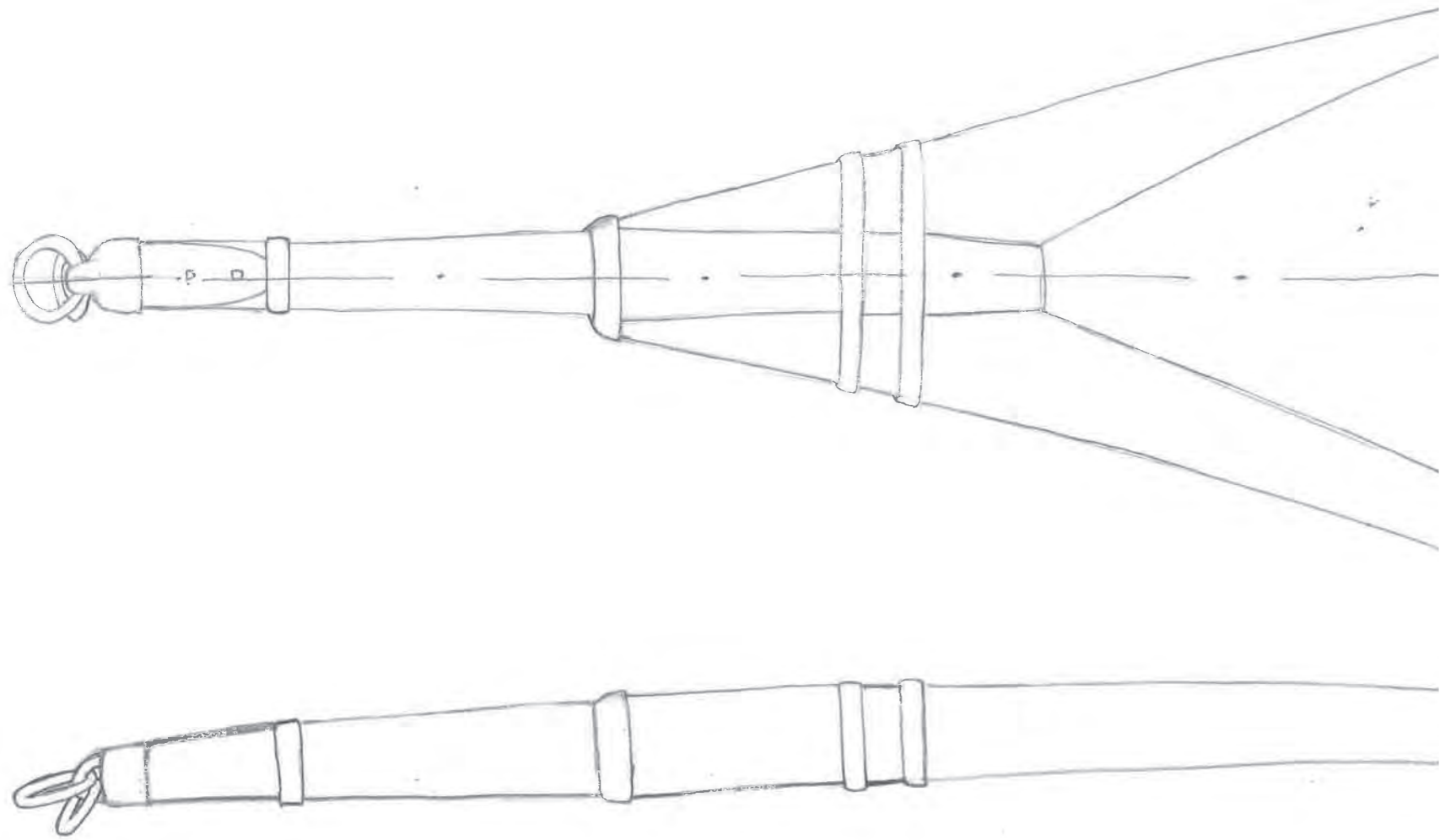
9 Details



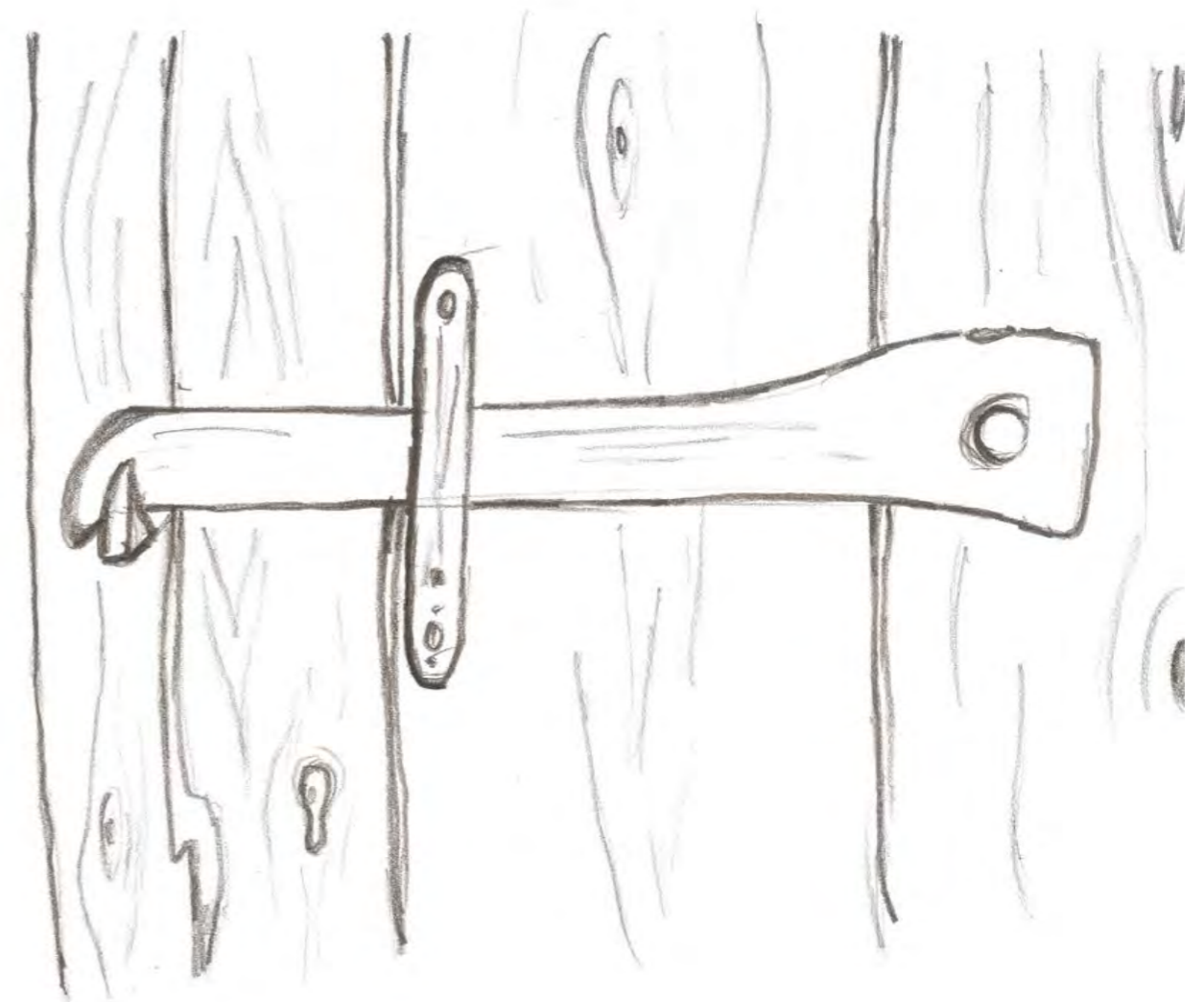
M 1:4



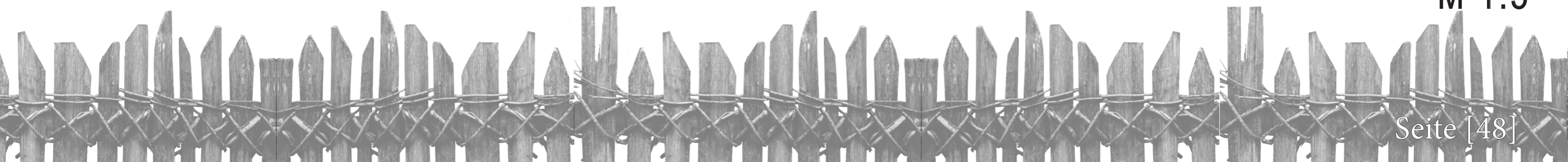
9 Details



M 1:5



M 1:5



10 Projektbeteiligte



Theodolitgruppe

Baker Alexander
Kalteis Simon
Krausler Sandra



Distogruppe1

Losgott Markus
Kloibhofer Johannes
Wührleitner Verena



Distogruppe4

Höfler Regina
Klapsch Christian
Perumprayil Geo



Finalgruppe

Peterherr Lisa
Shields Jennifer
Sorko Katharina



Distogruppe2

Baumgartner Marco
Kljajic Manuela
Perr Miriam



Distogruppe3

Rainer Florian
Rogl Thomas
Weithenthaler Gabriel



Fotogruppe

Maurer Martin
Paschek Andreas



Betreuer der Projektarbeit

DI (FH) Katja Helms, M.A.
DI Gerhard Krajicek
DI Eva Maria Egger

8.1 Monobild 1



Originalbild



Ergebnisse Ausgleich der Transformationsparameter

Verbesserungen			Größe des Ausgangsbildes	
Punkte	vX2 [cm]	vZ2 [cm]	Breite	Höhe
132	-0.267	1.325	3008	2000
133	-0.377	0.821		
139	1.264	-0.161		
141	0.723	1.941		
140	-3.942	-0.911		
137	2.599	-3.015		

Größe des Zielbildes
Breite: 3008
Höhe: 1939

Maßstab, Auflösung
Maßstab 1: 10.00
Auflösung: 33 dpi

Größe eines Pixel
1 Pixel = 0.775 cm

Farben interpolieren

Bild entzerrt

8.2 Monobild 2



Originalbild



Ergebnisse Ausgleich der Transformationsparameter

Verbesserungen			Größe des Ausgangsbildes	
Punkte	vX2 [cm]	vZ2 [cm]	Breite	Höhe
211	1.421	3.497	3008	2000
212	-0.446	-2.380		
213	-1.617	1.346		
214	2.842	-1.479		
215	-1.490	1.210		
216	-0.710	-2.195		

Größe des Zielbildes
Breite: 3008
Höhe: 1894

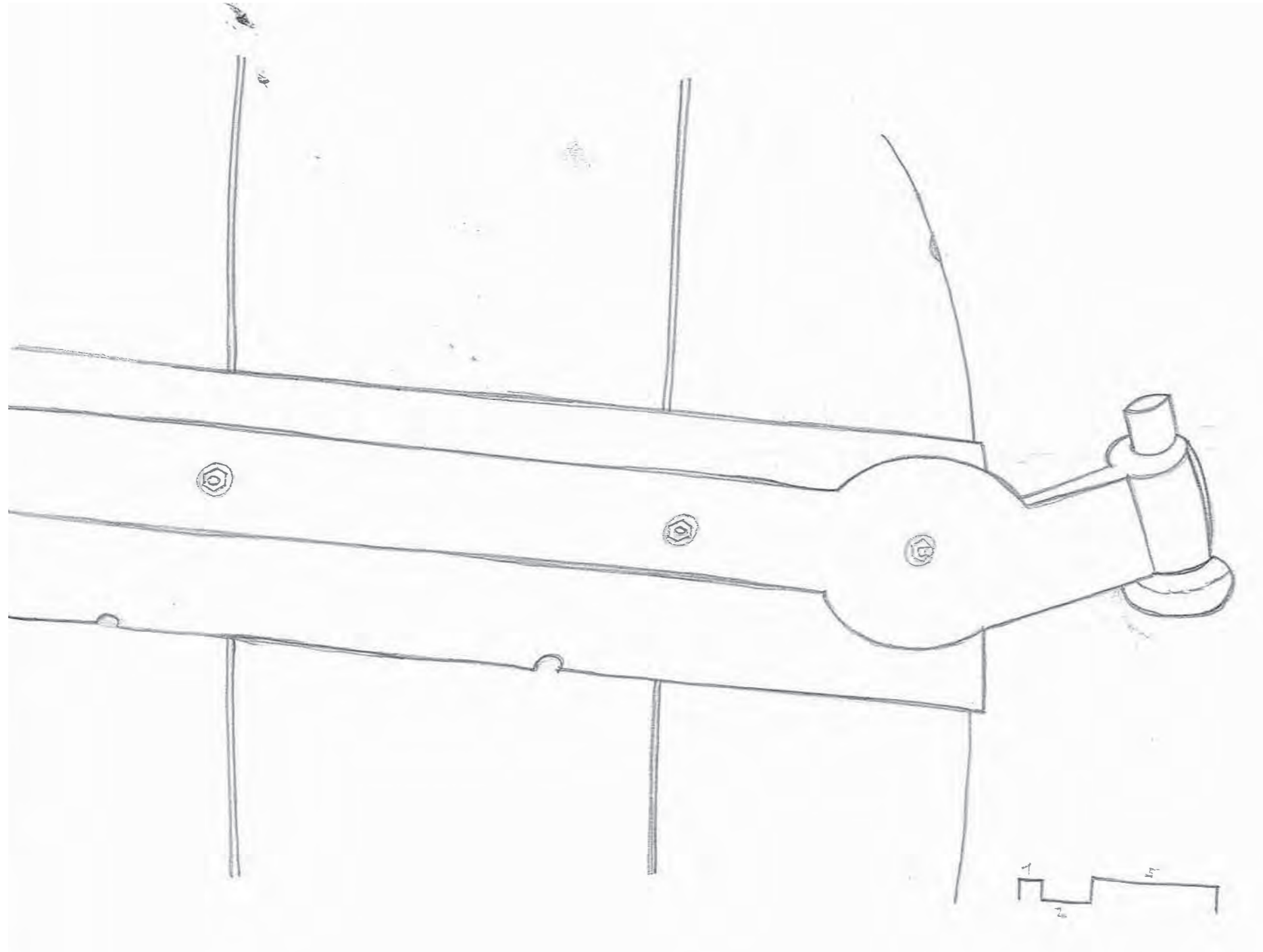
Maßstab, Auflösung
Maßstab 1: 10.00
Auflösung: 56 dpi

Größe eines Pixel
1 Pixel = 0.455 cm

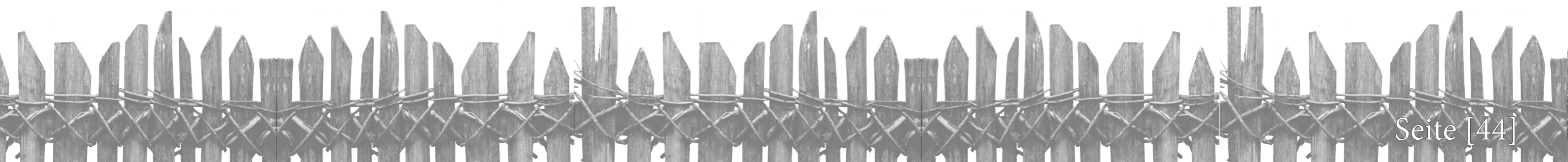
Farben interpolieren

Bild entzerrt

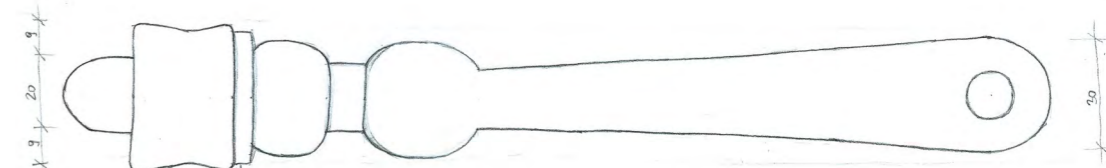
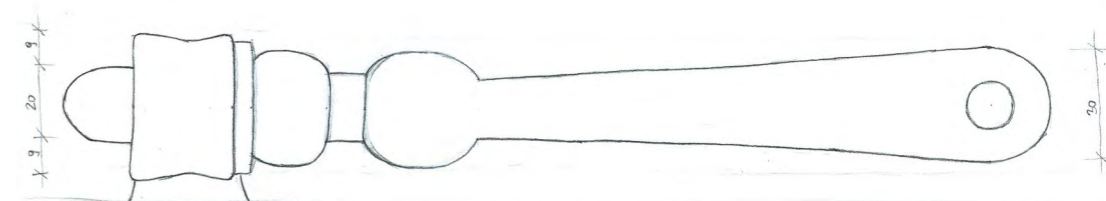
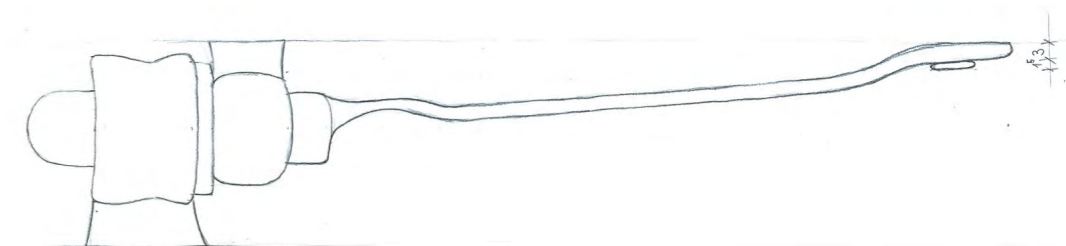
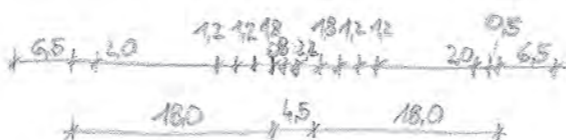
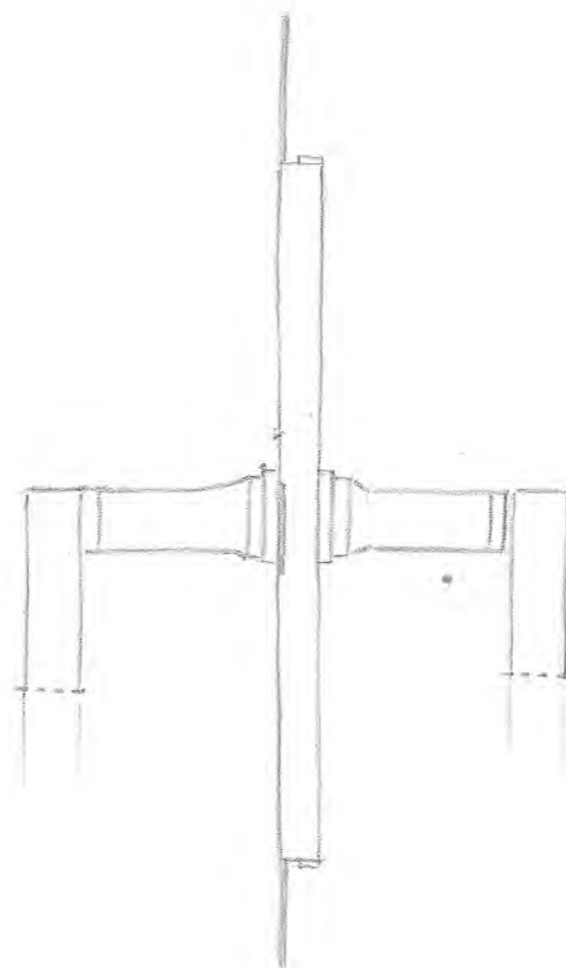
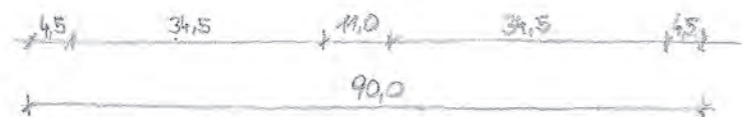
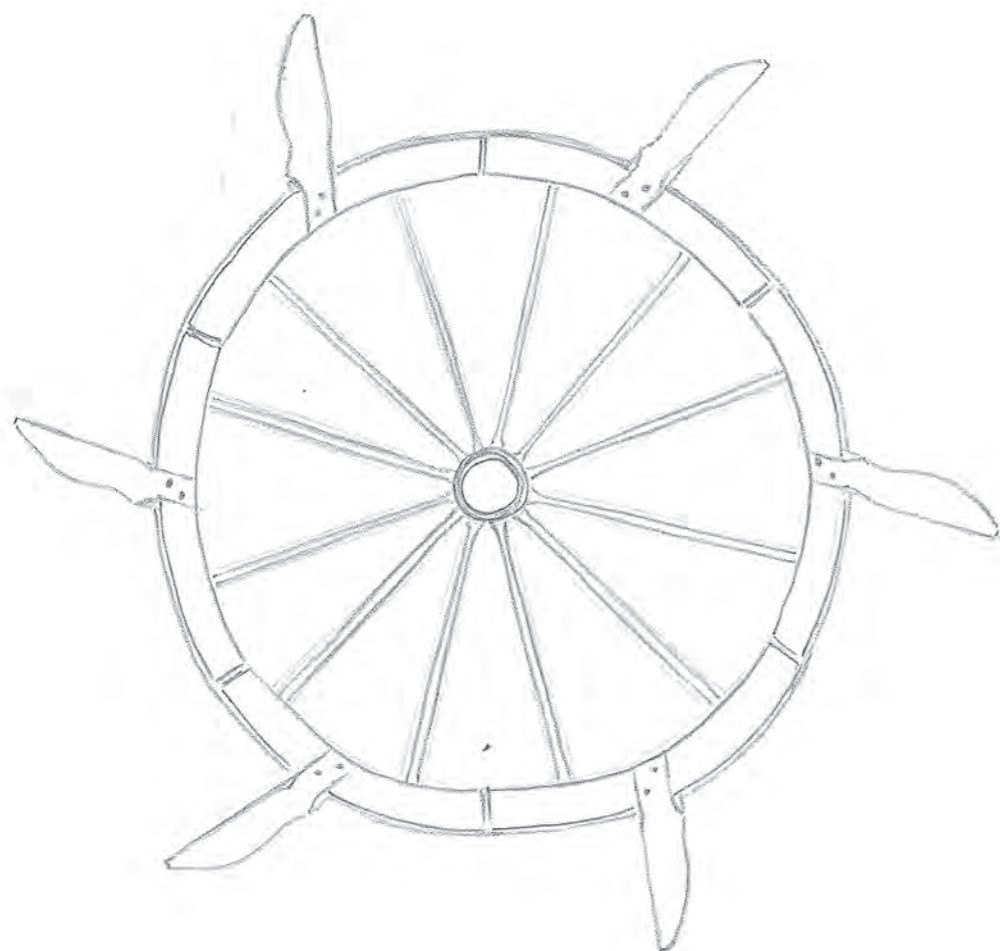




M 1:2



9 Details

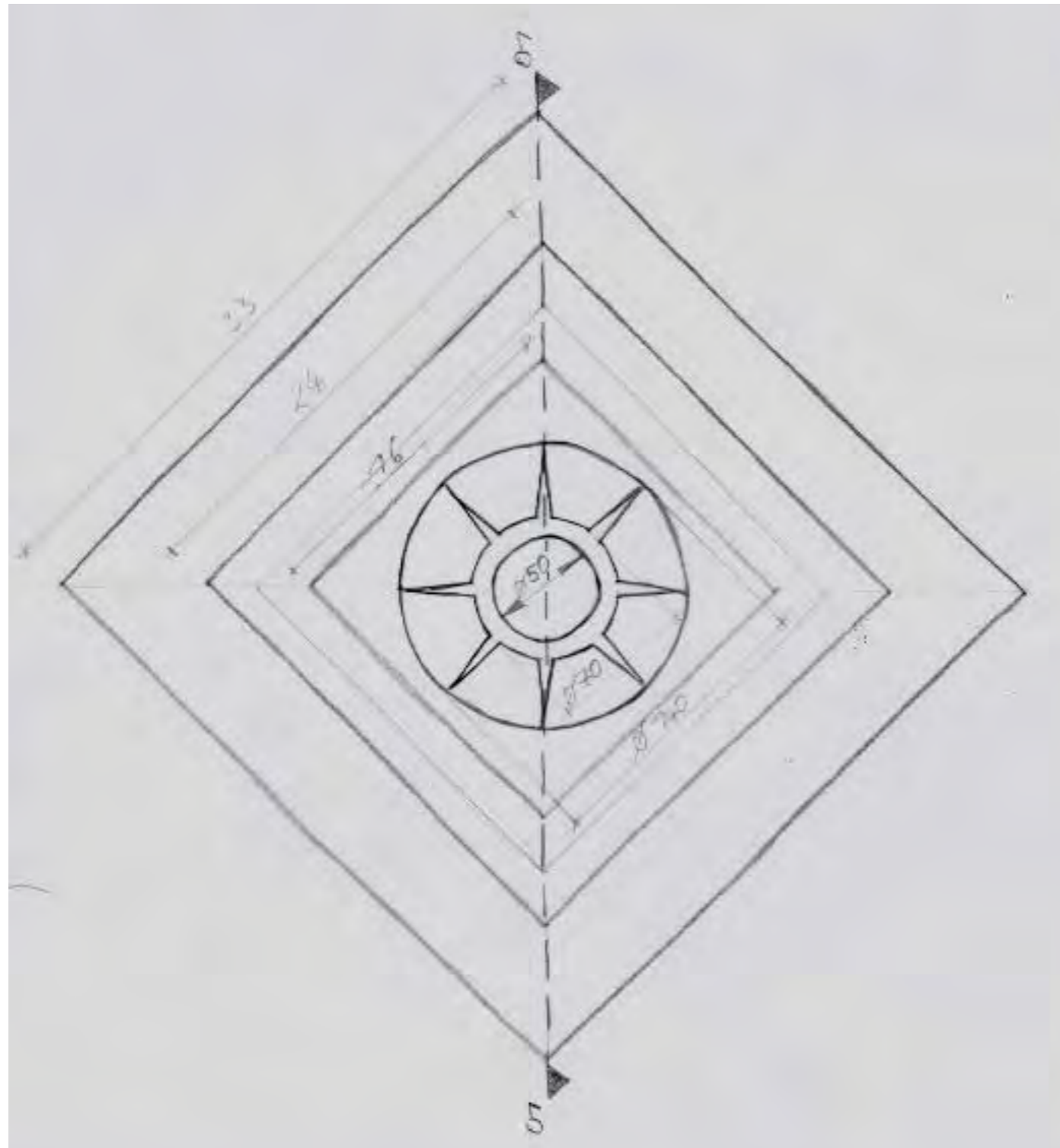


M 1:10

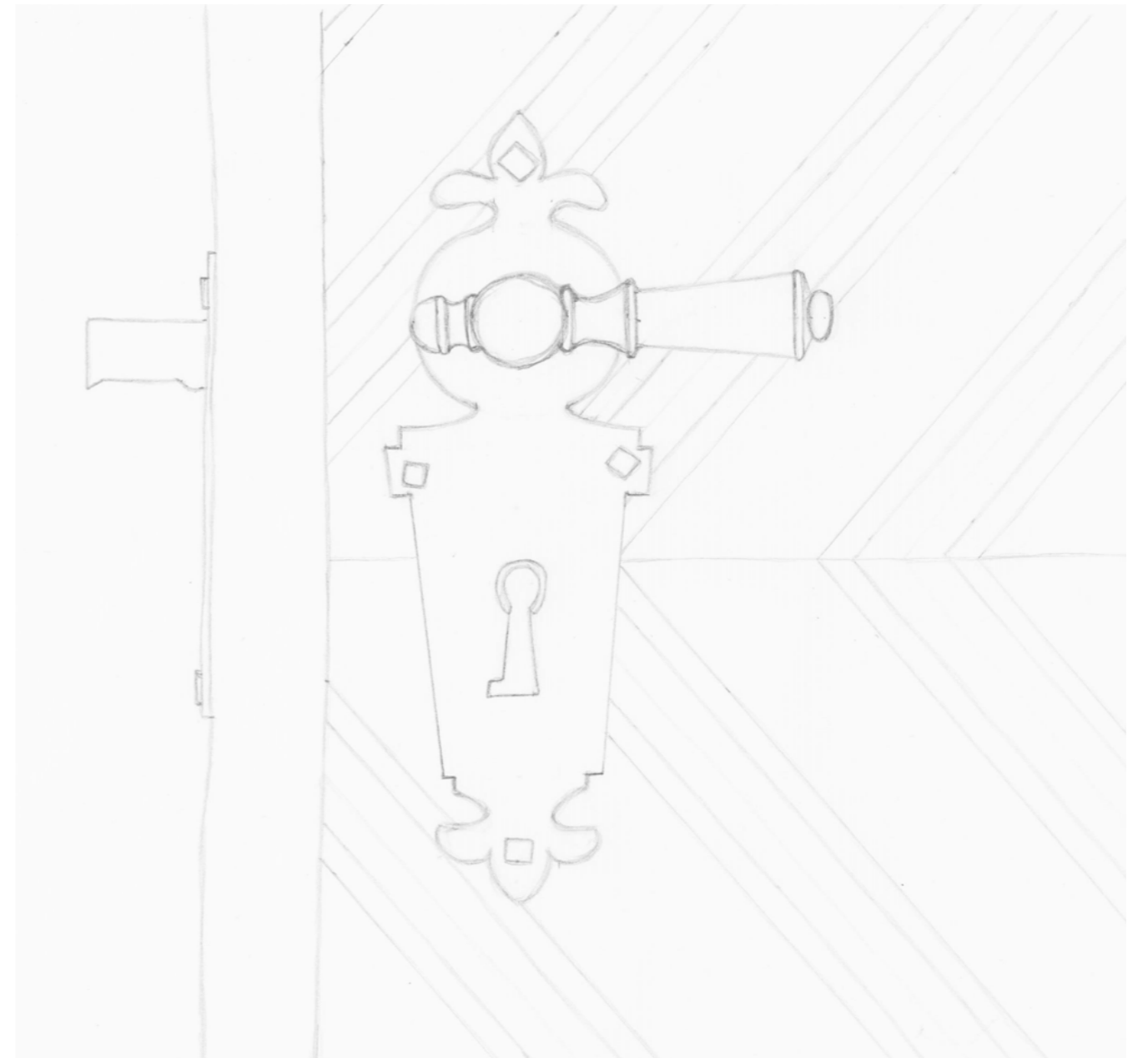
M 1:2



9 Details



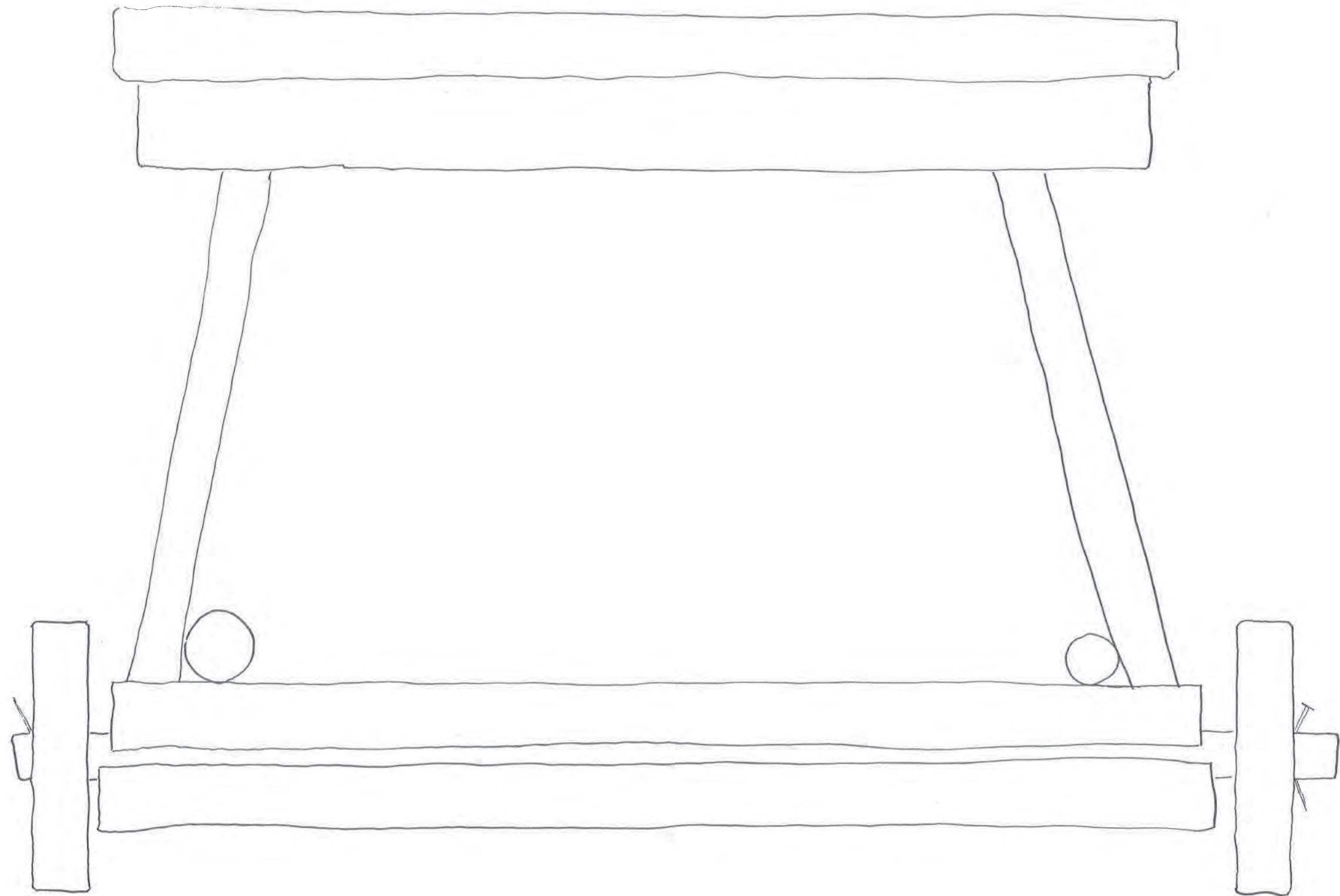
M 1:3



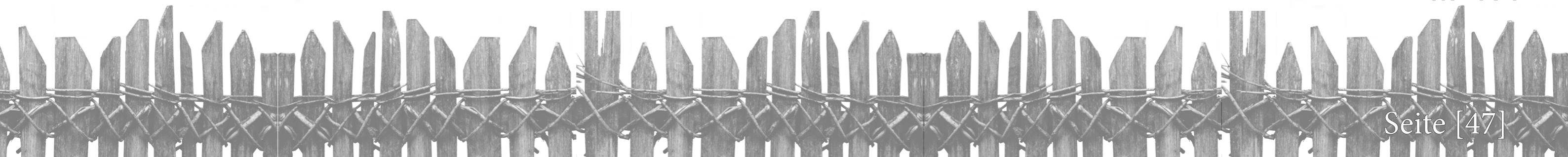
M 1:2



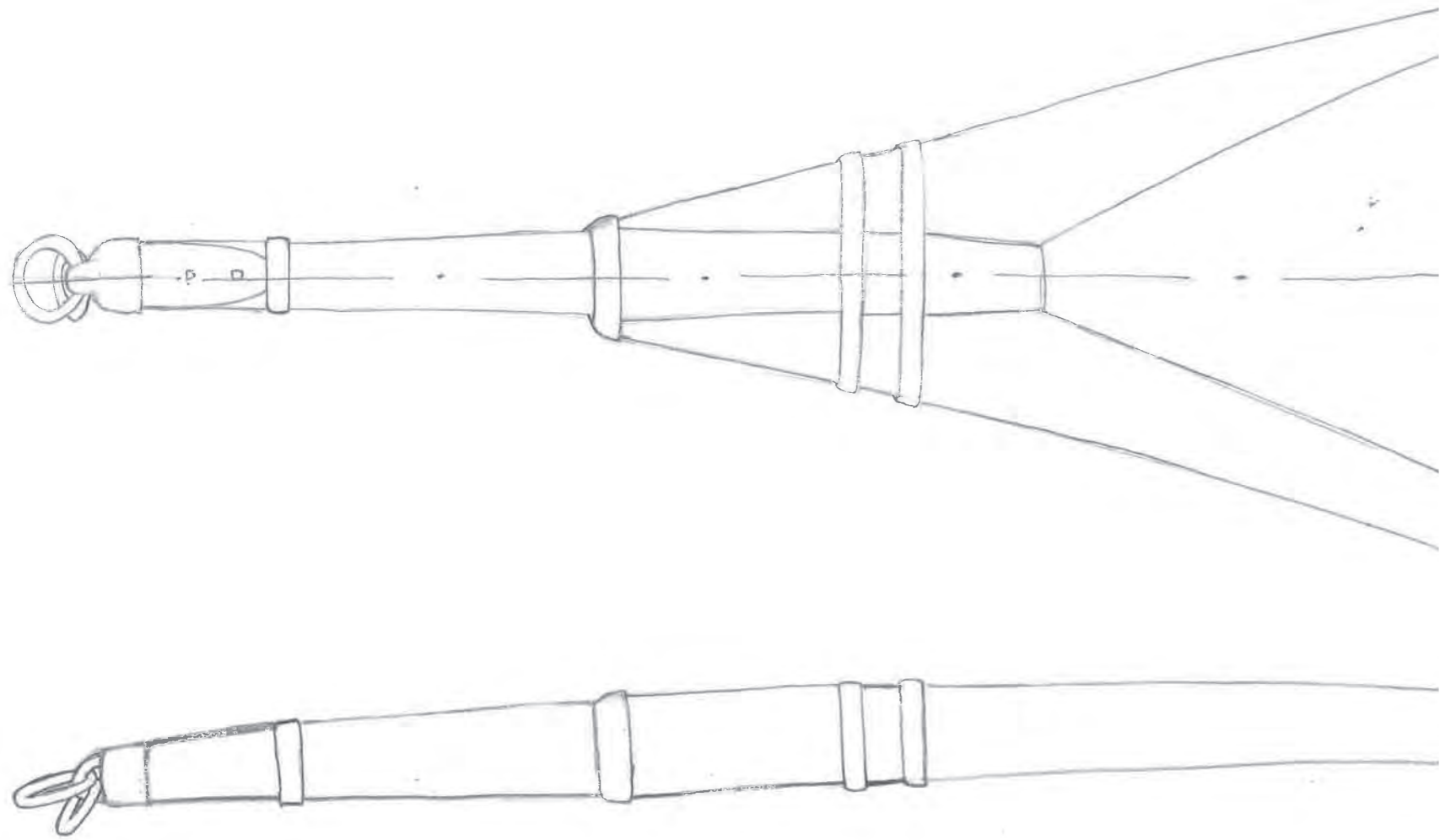
9 Details



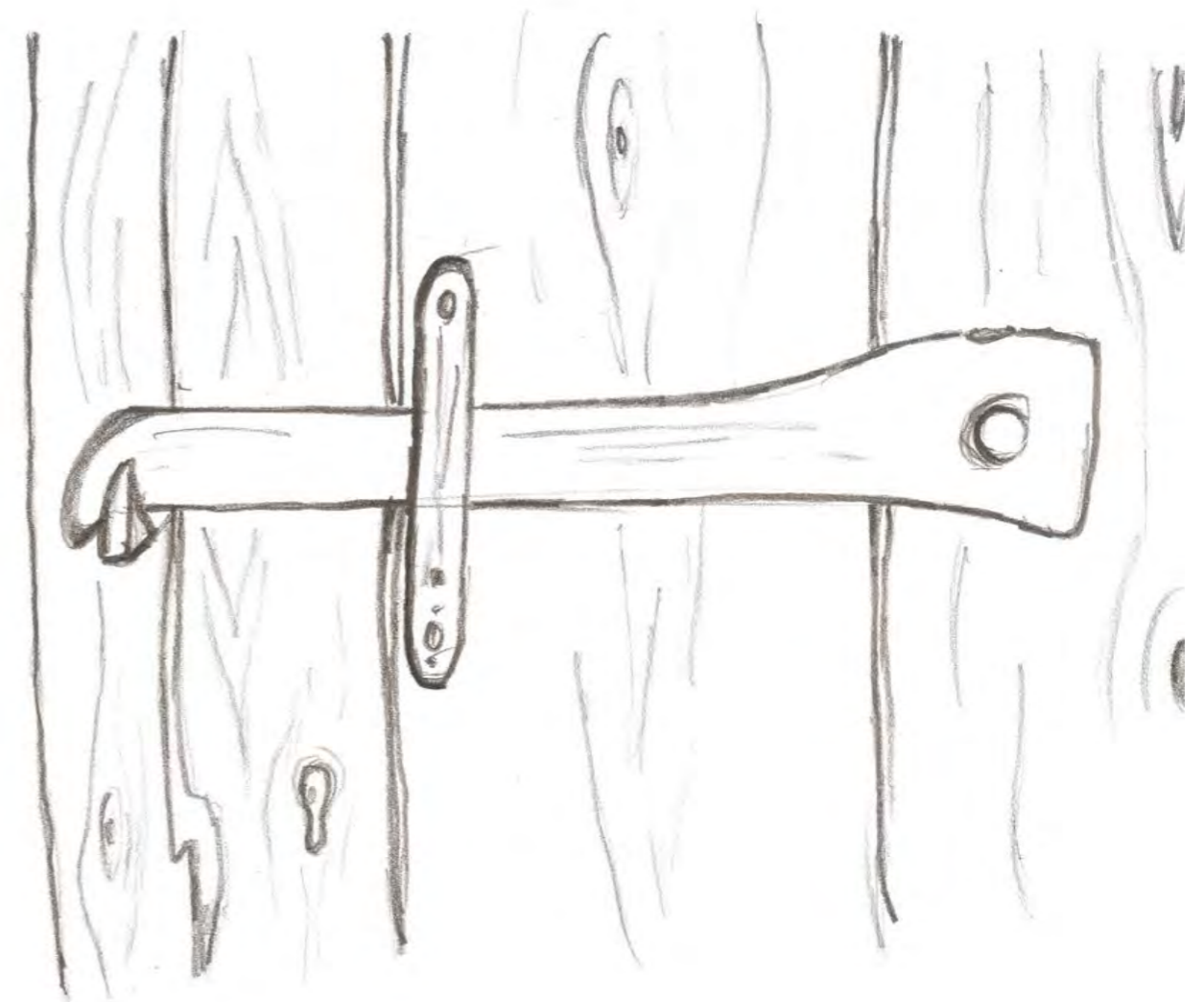
M 1:4



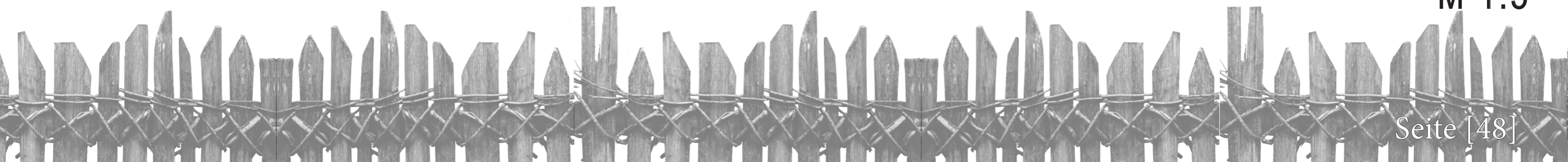
9 Details



M 1:5



M 1:5



10 Projektbeteiligte



Theodolitgruppe

Baker Alexander
Kalteis Simon
Krausler Sandra



Distogruppe1

Losgott Markus
Kloibhofer Johannes
Wührleitner Verena



Distogruppe4

Höfler Regina
Klapsch Christian
Perumprayil Geo



Finalgruppe

Peterherr Lisa
Shields Jennifer
Sorko Katharina



Distogruppe2

Baumgartner Marco
Kljajic Manuela
Perr Miriam



Distogruppe3

Rainer Florian
Rogl Thomas
Weithenthaler Gabriel



Fotogruppe

Maurer Martin
Paschek Andreas



Betreuer der Projektarbeit

DI (FH) Katja Helms, M.A.
DI Gerhard Krajicek
DI Eva Maria Egger